

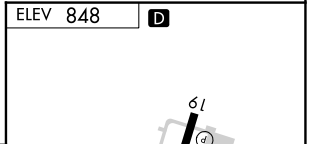
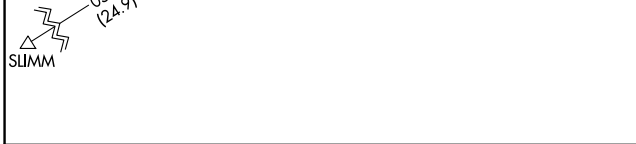
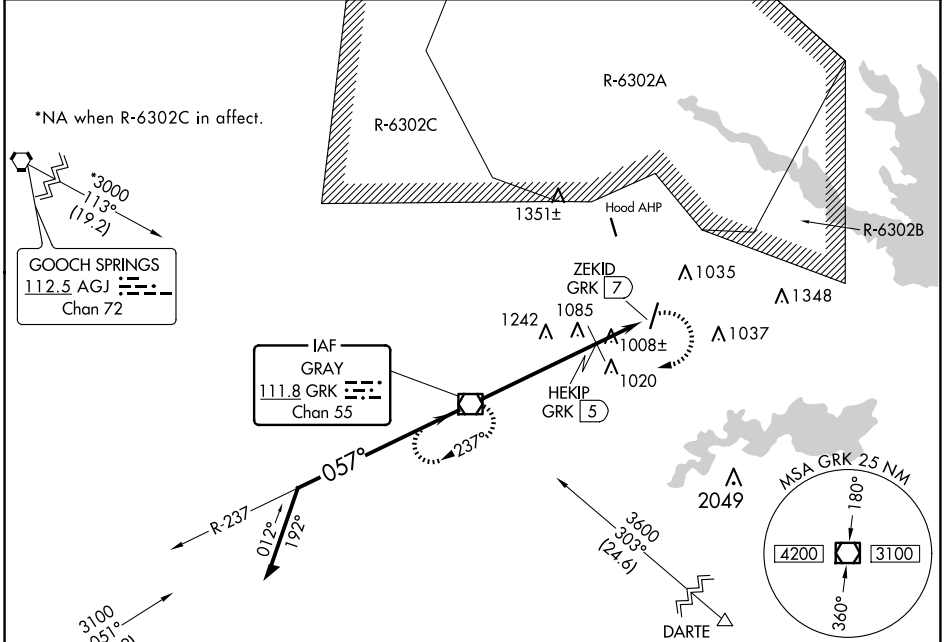
VOR/DME GRK 111.8 Chan 55	APP CRS 057°	Rwy Idg TDZE Apt Elev 848	N/A N/A 848
--	------------------------	--	-------------------

VOR-A
SKYLARK FLD (IL)E

NA Circling Rwy 19 NA at night.
When local altimeter setting not received, use Robert Gray AAF altimeter setting and increase all MDA 60 feet.

MISSED APPROACH: Climbing right turn to 3000 direct GRK VOR/DME and hold.

AWOS-3PT 128.575	GRAY APP CON 120.075 323.15	CLNC DEL 121.7	UNICOM 122.7 (CTAF) D
----------------------------	---------------------------------------	--------------------------	--



GRK VOR/DME	3000	2000	HEKIP GRK 5	ZEKID GRK 7
-------------	------	------	-------------	-------------

CATEGORY	A	B	C	D
C CIRCLING	1620-1 772 (800-1)	1620-1¼ 772 (800-1¼)	1620-2¼ 772 (800-2¼)	NA
HEKIP FIX MINIMUMS (DME REQUIRED)				
C CIRCLING	1320-1 472 (500-1)	1360-1 512 (600-1)	1440-1½ 592 (600-1½)	NA

FAF to MAP 7 NM					
Knots	60	90	120	150	180
Min:Sec	7:00	4:40	3:30	2:48	2:20

SC-3, 20 MAR 2025 to 17 APR 2025

SC-3, 20 MAR 2025 to 17 APR 2025