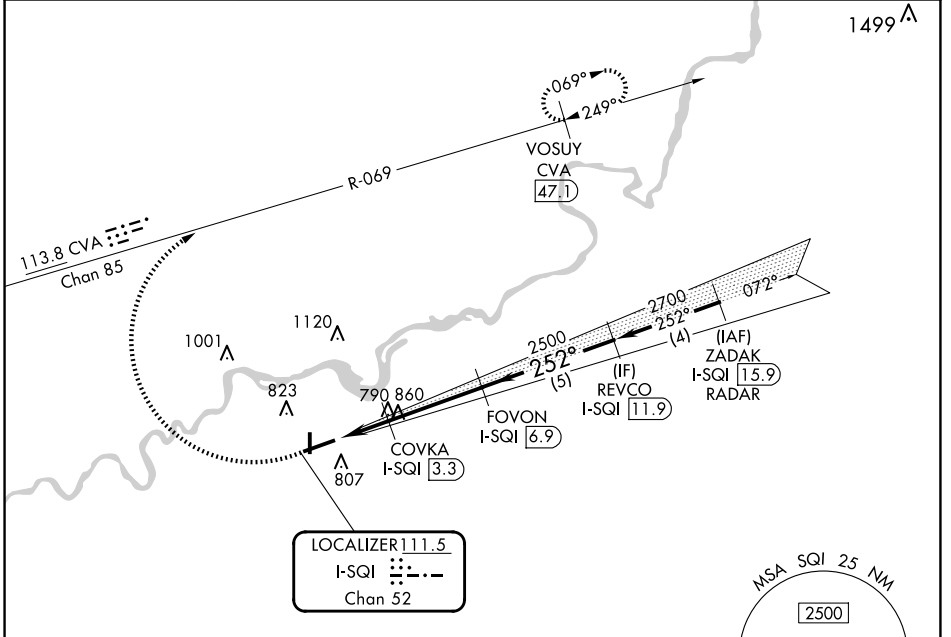


LOC/DME I-SQI 111.5 Chan 52	APP CRS 252°	Rwy Idg TDZE Apt Elev 6499 647 648
--	------------------------	--

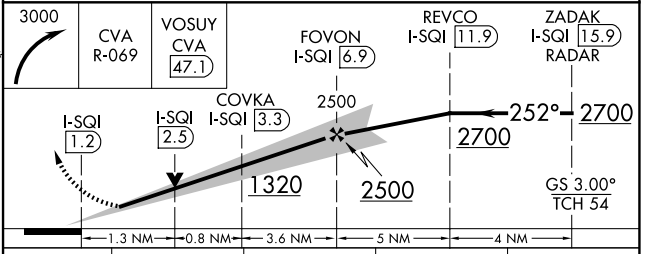
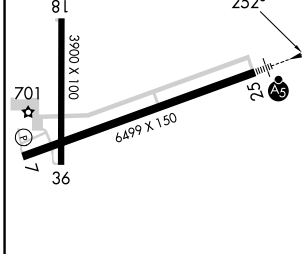
ILS or LOC RWY 25

WHITESIDE COUNTY/JOS H BITTORF FLD (SQI)

DME required. Radar required for procedure entry.		MALSR	MISSED APPROACH: Climbing right turn to 3000 on CVA VORTAC R-069 to VOSUY/CVA 47.1 DME and hold.	
AWOS-3PT 119.175	ROCKFORD APP CON 126.0 327.0	CLNC DEL 128.0	UNICOM 123.0 (CTAF) 0	



ELEV 648	TDZE 647
----------	----------



	HIRL Rwy 7-25 0				
	MIRL Rwy 18-36 0				
	REIL Rwy 7, 18 and 36 0				
FAF to MAP 5.7 NM					
Knots	60	90	120	150	180
Min:Sec	5:42	3:48	2:51	2:17	1:54
<input checked="" type="checkbox"/> CIRCLING	1140-1 492 (500-1)		1160-1½ 512 (600-1½)		1480-2¾ 832 (900-2¾)

EC-3, 20 MAR 2025 to 17 APR 2025

EC-3, 20 MAR 2025 to 17 APR 2025