

LOC/DME I-SQI 111.5 Chan 52	APP CRS 072°	Rwy ldg 6499 TDZE 648 Apt Elev 648
---	------------------------	---

LOC BC RWY 7

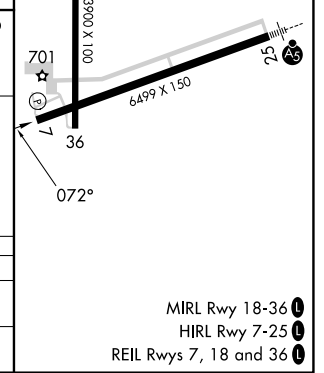
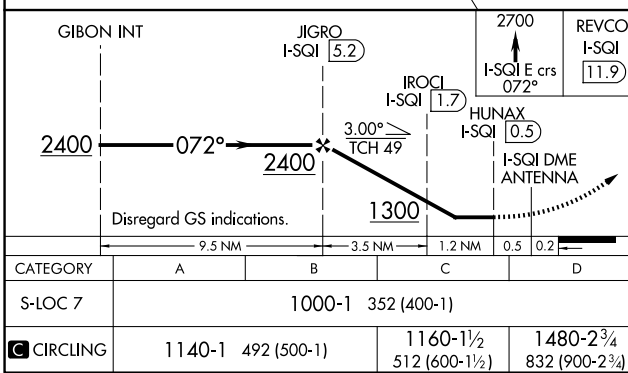
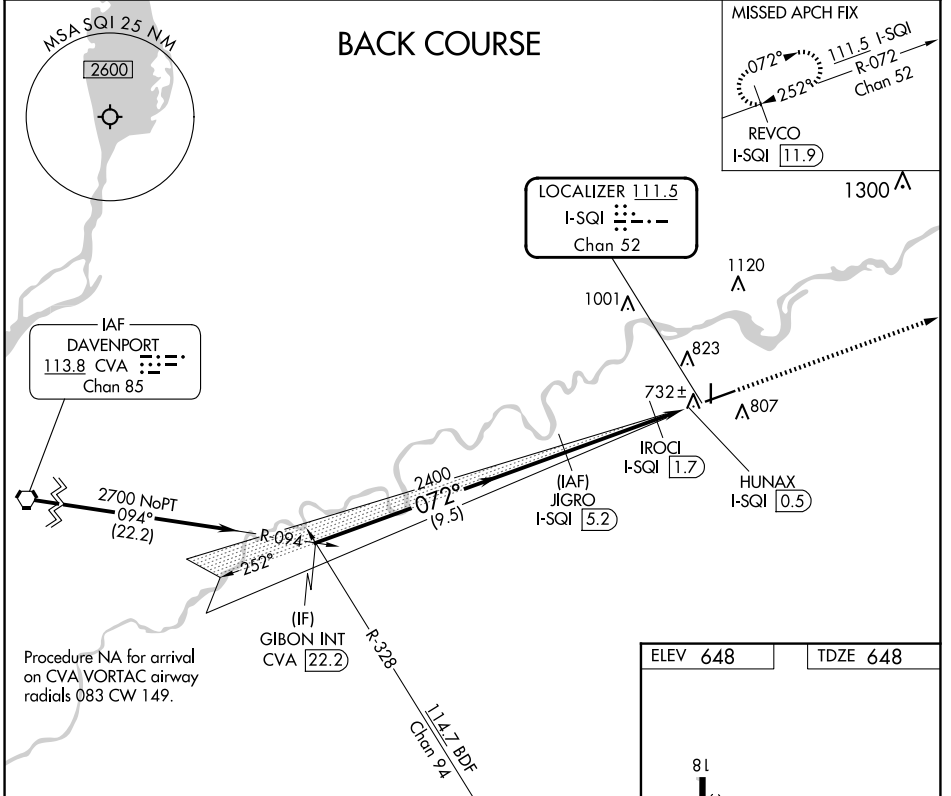
WHITESIDE COUNTY/JOS H BITTORF FLD (SQI)

DME required.

NA Rwy 7 helicopter visibility reduction below 3/4 SM NA.

MISSED APPROACH: Climb to 2700 on I-SQI localizer east course 072° to REVCO/I-SQI 11.9 DME and hold.

AWOS-3PT 119.175	ROCKFORD APP CON 126.0 327.0	CLNC DEL 128.0	UNICOM 123.0 (CTAF) 0
----------------------------	--	--------------------------	---------------------------------



EC-3, 20 MAR 2025 to 17 APR 2025

EC-3, 20 MAR 2025 to 17 APR 2025