

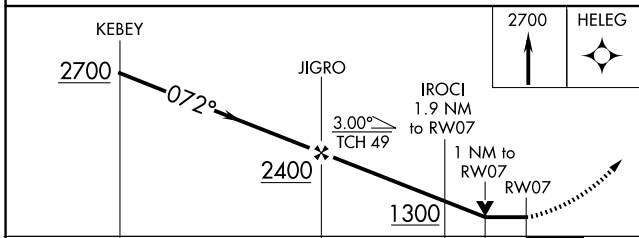
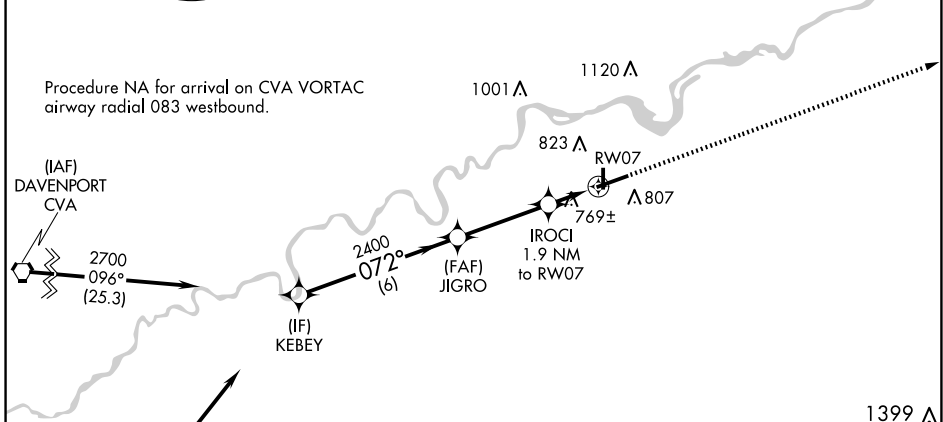
APP CRS	Rwy Idg	6499
072°	TDZE	648
	Apt Elev	648

RNAV (GPS) RWY 7

WHITESIDE COUNTY/JOS H BITTORF FLD (SQI)

RNP APCH -GPS.		MISSED APPROACH: Climb to 2700 direct HELEG and hold.	
Rwy 7 helicopter visibility reduction below 3/4 SM NA.			

AWOS-3PT 119.175	ROCKFORD APP CON 126.0 327.0	CLNC DEL 128.0	UNICOM 123.0 (CTAF) 0
----------------------------	----------------------------------------	--------------------------	---------------------------------



CATEGORY	A	B	C	D
LNAV MDA	1020-1 372 (400-1)			
CIRCLING	1140-1 492 (500-1)	1160-1½ 512 (600-1½)	1480-2¾ 832 (900-2¾)	

ELEV 648 TDZE 648

HIRL Rwy 7-25

MIRL Rwy 18-36

REIL Rws 7, 18 and 36

EC-3, 20 MAR 2025 to 17 APR 2025

EC-3, 20 MAR 2025 to 17 APR 2025