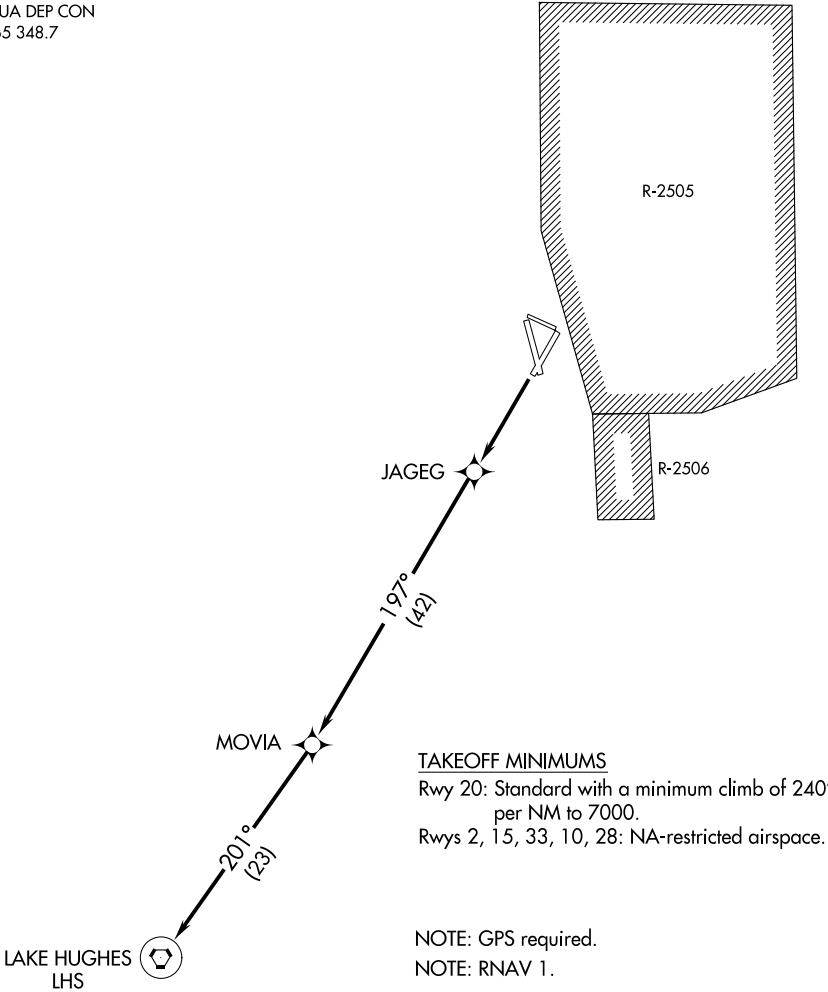


JOSHUA DEP CON  
133.65 348.7



TAKEOFF MINIMUMS  
Rwy 20: Standard with a minimum climb of 240' per NM to 7000.  
Rwys 2, 15, 33, 10, 28: NA-restricted airspace.

NOTE: GPS required.  
NOTE: RNAV 1.

NOTE: Chart not to scale.

DEPARTURE ROUTE DESCRIPTION

TAKEOFF RUNWAY 20: Climb direct JAGEG then continue climb to 8000 via 197° track to MOVIA and 201° track to LHS VORTAC. Thence via assigned route and altitude.  
TAKEOFF RUNWAYS 2, 33, 15, 10, and 28: NA.

SW-3, 20 MAR 2025 to 17 APR 2025

SW-3, 20 MAR 2025 to 17 APR 2025