

WAAS CH 61307 W20A	APP CRS 198°	Rwy Idg TDZE Apt Elev	4028 934 934
--	------------------------	-----------------------------	---

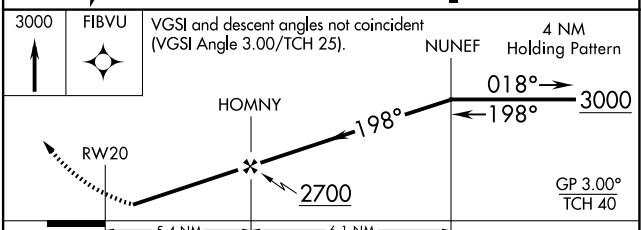
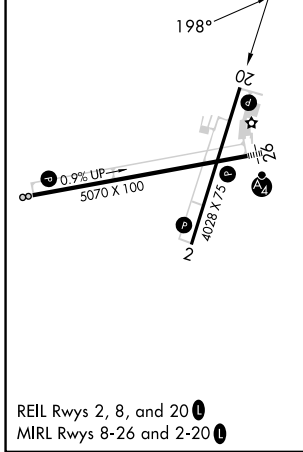
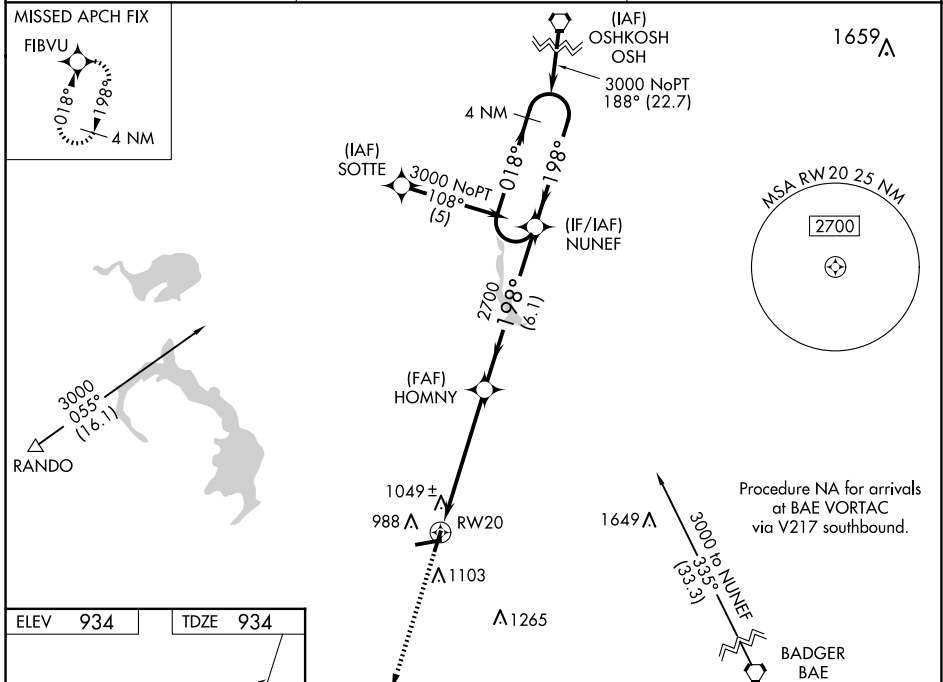
RNAV (GPS) RWY 20

DODGE COUNTY (UNU)

⚠ For uncompensated Baro-VNAV systems, LNAV/VNAV NA below -16° C (4° F) or above 54° C (130° F). DME/DME RNP-0.3 NA. When local altimeter setting not received, use Dane County Rgnl-Truax Fld altimeter setting and increase all DA/MDA 100 feet, increase visibilities ¼ mile. Baro-VNAV NA when using Dane County Rgnl-Truax Fld altimeter setting. Visibility reduction by helicopters NA.

⚠ MISSED APPROACH: Climb to 3000 direct FIBVU and hold.

AWOS-3 120.825	MADISON APP CON * 119.15 343.7	UNICOM 122.7 (CTAF)
--------------------------	--	-------------------------------



CATEGORY	A	B	C	D
LPV DA	1214-1	280 (300-1)		NA
LNAV/VNAV DA	1350-1½	416 (500-1½)		NA
LNAV MDA	1300-1	366 (400-1)		NA
C CIRCLING	1440-1	506 (600-1)	1440-1½ 506 (600-1½)	NA

EC-3, 20 MAR 2025 to 17 APR 2025

EC-3, 20 MAR 2025 to 17 APR 2025