

APP CRS	Rwy Idg	<b>5070</b>
<b>261°</b>	TDZE	<b>934</b>
	Apt Elev	<b>934</b>

# RNAV (GPS) RWY 26

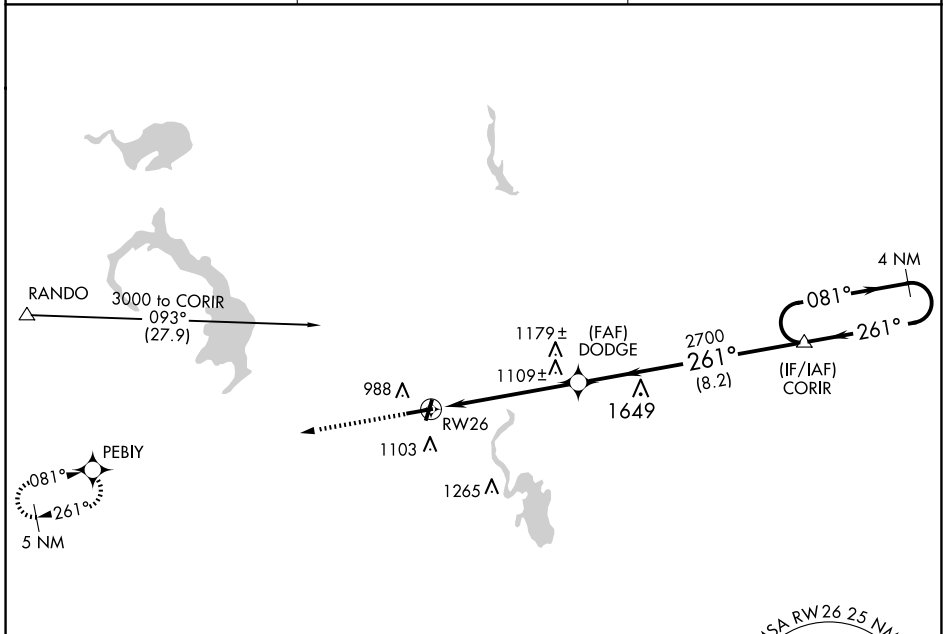
DODGE COUNTY (UNU)

**⚠** When local altimeter setting not received, use Dane County Rgnl-Truax Fld altimeter setting and increase all MDAs 100 feet, and increase Circling Cat C visibility ¼ SM. DME/DME RNP-0.3 NA. Visibility reduction by helicopters NA. Inoperative table does not apply.

**MALSF**

**MISSED APPROACH:** Climb to 3000 direct PEBIY and hold.

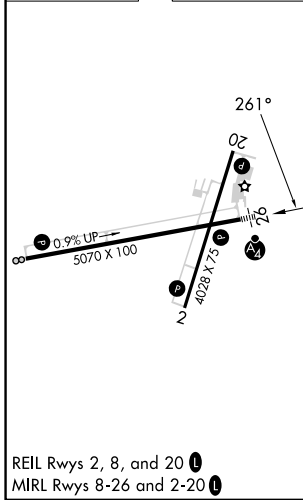
<b>AWOS-3</b> <b>120.825</b>	<b>MADISON APP CON *</b> <b>119.15 343.7</b>	<b>UNICOM</b> <b>122.7 (CTAF) 1</b>
---------------------------------	---	--



EC-3, 20 MAR 2025 to 17 APR 2025

EC-3, 20 MAR 2025 to 17 APR 2025

ELEV 934	TDZE 934
----------	----------



3000 PEBIY 4 NM Holding Pattern	CORIR 4 NM Holding Pattern			
	RWY 26 2700 3.04° TCH 34			
5.4 NM	8.2 NM			3000
CATEGORY	A	B	C	D
LNAV MDA	1360-1	426 (500-1)	1360-1¼ 426 (500-1¼)	NA
CIRCLING	1440-1	506 (600-1)	1440-1½ 506 (600-1½)	NA