

WAAS CH <b>81832</b> <b>W36A</b>	APP CRS <b>356°</b>	Rwy Idg TDZE Apt Elev	<b>3100</b> <b>99</b> <b>103</b>
--	------------------------	-----------------------------	--

# RNAV (GPS) RWY 36

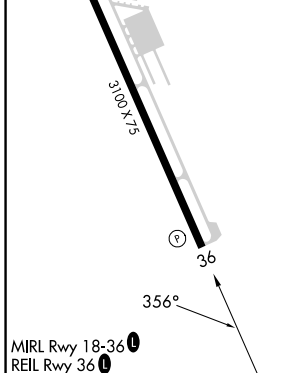
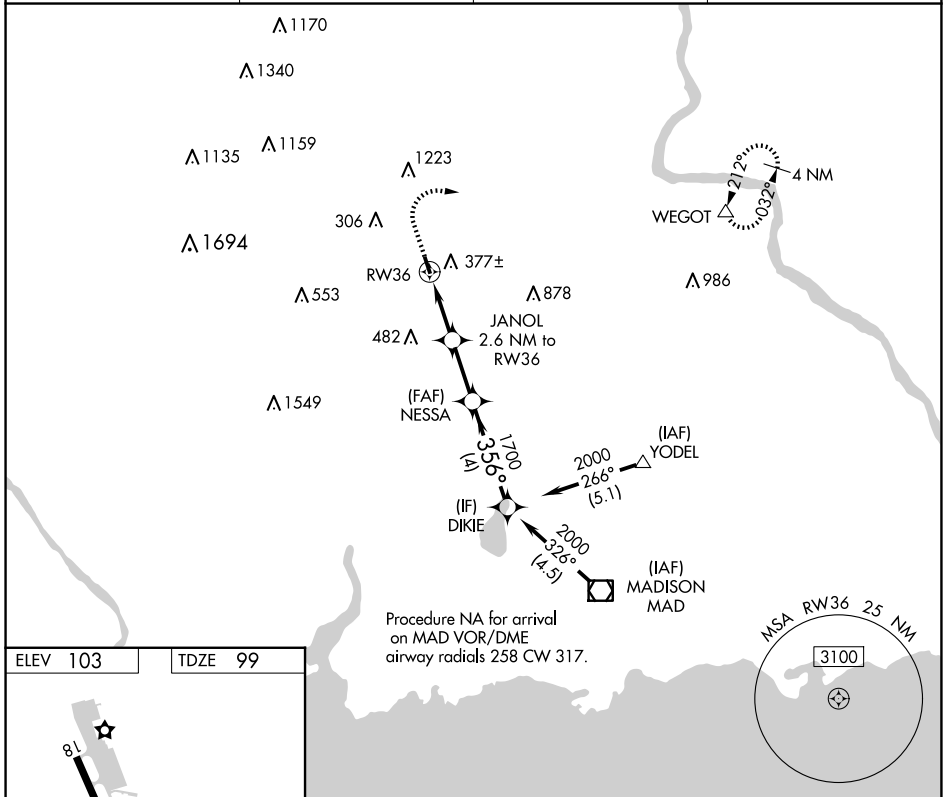
MERIDEN MARKHAM MUNI (MMK)

RNP APCH.

- Procedure NA at night.
- Rwy 36 helicopter visibility reduction below 1 SM NA.

MISSED APPROACH: Climb to 800 then climbing right turn to 2500 direct WEGOT and hold.

ASOS <b>134.925</b>	BRADLEY APP CON <b>127.8 269.325</b>	CLNC DEL <b>120.65</b>	UNICOM <b>123.05</b> (CTAF) <b>1</b>
------------------------	---	---------------------------	---



800	2500	WEGOT	Visual Segment - Obstacles.			
↑	↷	△				
		JANOL				
		2.6 NM to RWY 36				
		NESSA				
		DIKIE				
		2000				
		356°				
		1700				
		960				
		2.6 NM	2.3 NM		4 NM	
CATEGORY	A	B	C	D		
LP MDA	660-1	561 (600-1)	NA			
LNAV MDA	760-1	661 (700-1)	NA			
<b>C</b> CIRCLING	780-1	677 (700-1)	NA			

NE-1, 20 MAR 2025 to 17 APR 2025

NE-1, 20 MAR 2025 to 17 APR 2025