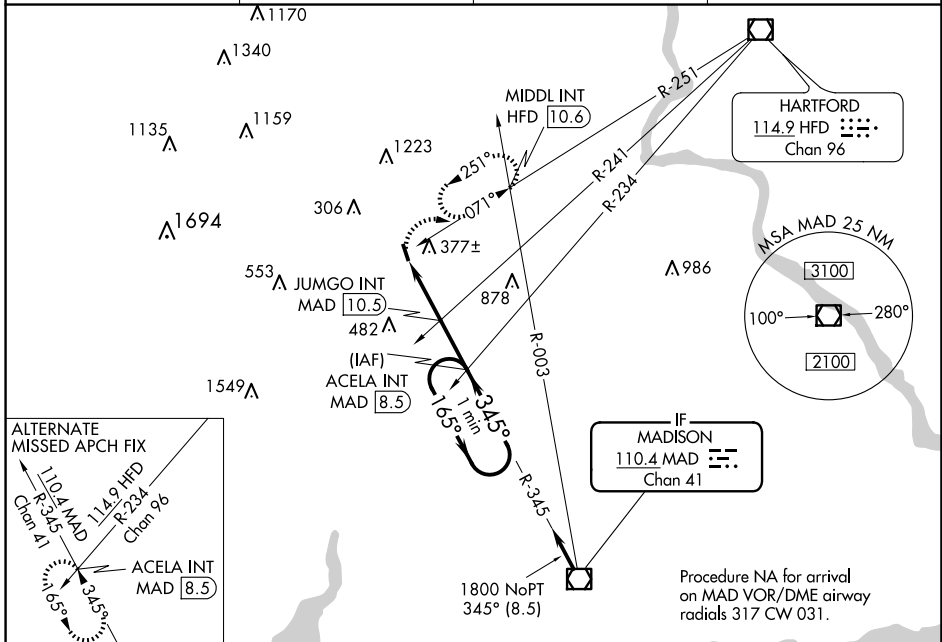


VOR/DME MAD	APP CRS	Rwy Idg	3100
<b>110.4</b>	<b>345°</b>	TDZE	<b>99</b>
Chan 41		Apt Elev	<b>103</b>

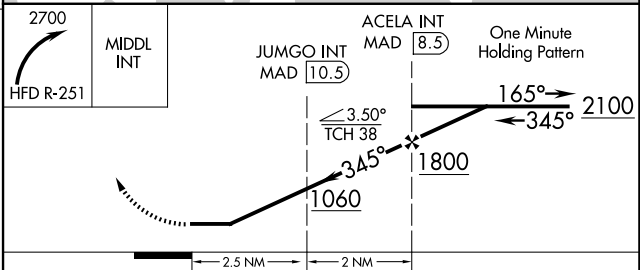
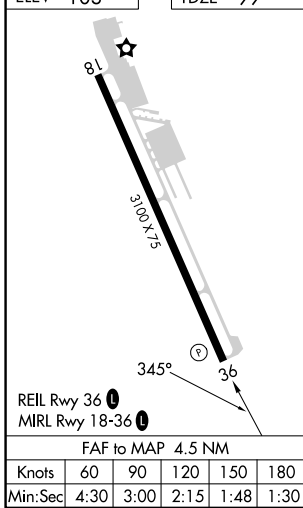
# VOR RWY 36

MERIDEN MARKHAM MUNI (MMK)

<p><b>▼</b> Rwy 36 helicopter visibility reduction below 1 SM NA. Procedure NA at night.</p> <p><b>▲</b></p>		<p>MISSED APPROACH: Climbing right turn to 2700 on HFD VOR/DME R-251 to MIDL INT/HFD 10.6 DME and hold, continue climb-in-hold to 2700.</p>	
ASOS	BRADLEY APP CON	CLNC DEL	UNICOM
<b>134.925</b>	<b>127.8 269.325</b>	<b>120.65</b>	<b>123.05 (CTAF) ①</b>



ELEV 103	TDZE 99
----------	---------



CATEGORY	A	B	C	D
S-36	1060-1¼ 961 (1000-1½)	1060-1½ 961 (1000-1½)		NA
<b>C</b> CIRCLING	1060-1¼ 957 (1000-1½)	1060-1½ 957 (1000-1½)		NA
JUMGO FIX MINIMUMS (DUAL VOR RECEIVERS OR DME REQUIRED)				
S-36	880-1 781 (800-1)	880-1¼ 781 (800-1½)		NA
<b>C</b> CIRCLING	880-1 777 (800-1)	920-1¼ 817 (900-1½)		NA

NE-1, 20 MAR 2025 to 17 APR 2025

NE-1, 20 MAR 2025 to 17 APR 2025