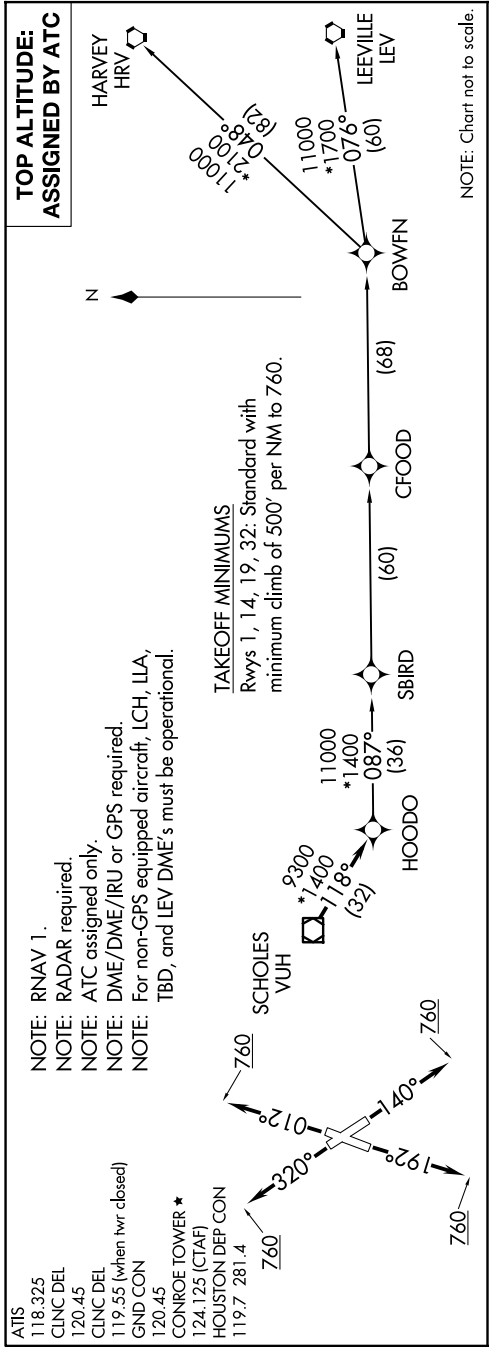


HOODO SEVEN DEPARTURE (RNAV)

SC-5, 20 MAR 2025 to 17 APR 2025



NOTE: Chart not to scale.

DEPARTURE ROUTE DESCRIPTION

- TAKEOFF RUNWAY 1:** Climb on heading 012° to 760, for RADAR vectors to VUH VOR/DME, thence
- TAKEOFF RUNWAY 14:** Climb on heading 140° to 760, for RADAR vectors to VUH VOR/DME, thence
- TAKEOFF RUNWAY 19:** Climb on heading 192° to 760, for RADAR vectors to VUH VOR/DME, thence
- TAKEOFF RUNWAY 32:** Climb on heading 320° to 760, for RADAR vectors to VUH VOR/DME, thence

. . . . on track 118° to HOODO, then on (transition). Maintain ATC assigned altitude.
 Expect filed altitude 10 minutes after departure.

- BOWFN TRANSITION (HOODO7.BOWFN)
- CFOOD TRANSITION (HOODO7.CFOOD)
- HARVEY TRANSITION (HOODO7.HRV)
- LEVILLE TRANSITION (HOODO7.LEV)
- SBIRD TRANSITION (HOODO7.SBIRD)

SC-5, 20 MAR 2025 to 17 APR 2025