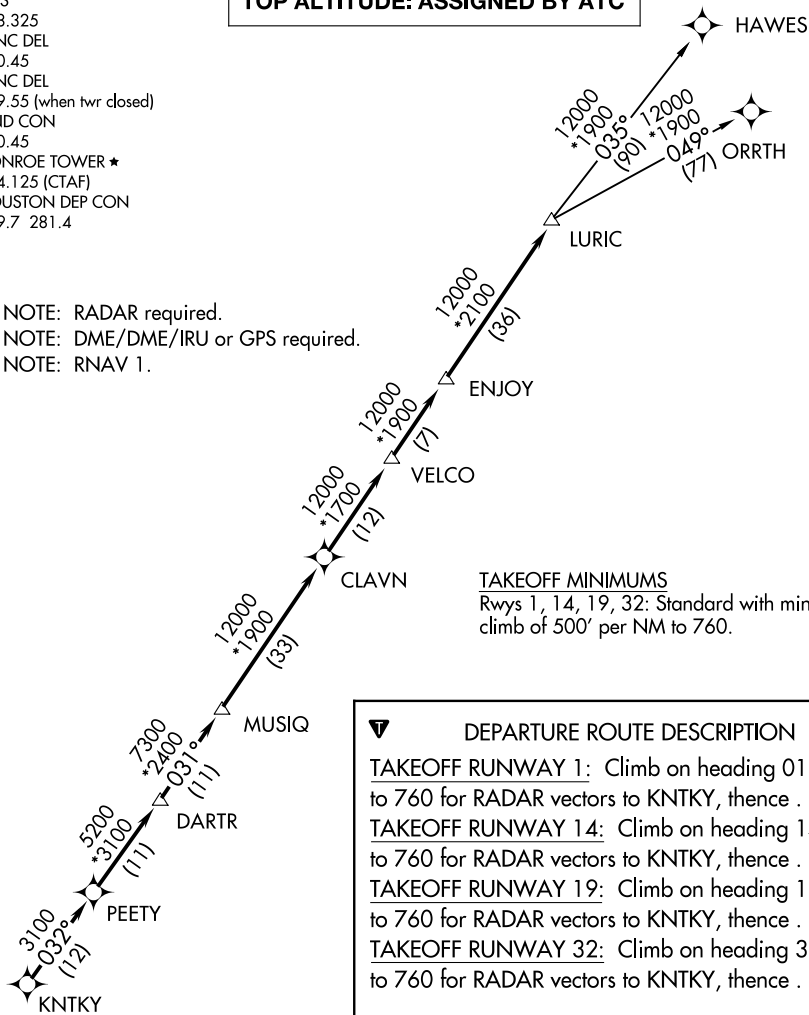


LURIC EIGHT DEPARTURE (RNAV)

ATIS
 118.325
 CLNC DEL
 120.45
 CLNC DEL
 119.55 (when twr closed)
 GND CON
 120.45
 CONROE TOWER ★
 124.125 (CTAF)
 HOUSTON DEP CON
 119.7 281.4

TOP ALTITUDE: ASSIGNED BY ATC

NOTE: RADAR required.
 NOTE: DME/DME/IRU or GPS required.
 NOTE: RNAV 1.



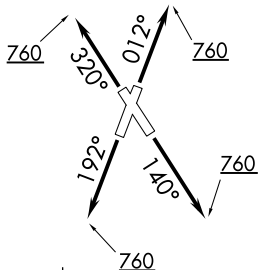
TAKEOFF MINIMUMS

Rwys 1, 14, 19, 32: Standard with minimum climb of 500' per NM to 760.

DEPARTURE ROUTE DESCRIPTION

TAKEOFF RUNWAY 1: Climb on heading 012° to 760 for RADAR vectors to KNTKY, then
TAKEOFF RUNWAY 14: Climb on heading 140° to 760 for RADAR vectors to KNTKY, then
TAKEOFF RUNWAY 19: Climb on heading 192° to 760 for RADAR vectors to KNTKY, then
TAKEOFF RUNWAY 32: Climb on heading 320° to 760 for RADAR vectors to KNTKY, then
 on track 032° to PEETY, then on track 032° to DARTR, then on track 031° to MUSIQ, then on track 031° to CLAVN, then on track 031° to VELCO, then on track 031° to ENJOY, then on track 031° to LURIC, then on (transition). Maintain ATC assigned altitude. Expect filed altitude 10 minutes after departure.

HAWES TRANSITION (LURIC8.HAWES)
ORRTH TRANSITION (LURIC8.ORRTH)



NOTE: Chart not to scale.

SC-5, 20 MAR 2025 to 17 APR 2025

SC-5, 20 MAR 2025 to 17 APR 2025