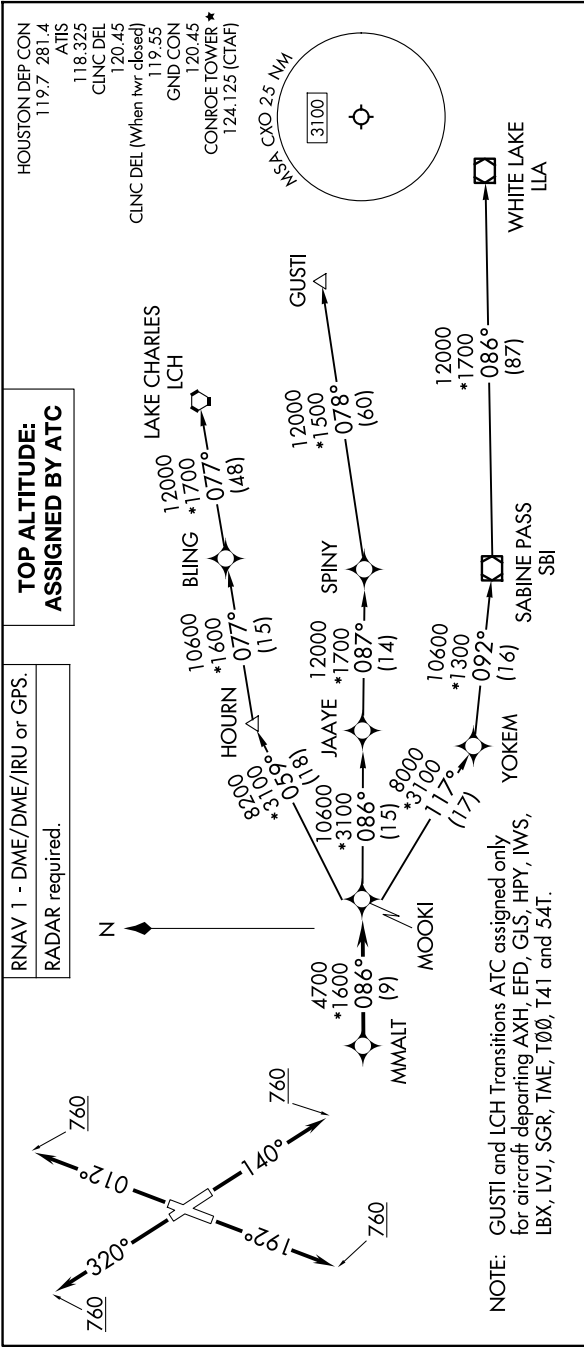


MMALT SEVEN DEPARTURE (RNAV)

HOUSTON, TEXAS

SC-5, 20 MAR 2025 to 17 APR 2025



DEPARTURE ROUTE DESCRIPTION

- TAKEOFF RUNWAY 1:** Climb on heading 012° to 760, for RADAR vectors to MMALT, thence. . . .
- TAKEOFF RUNWAY 14:** Climb on heading 140° to 760, for RADAR vectors to MMALT, thence. . . .
- TAKEOFF RUNWAY 19:** Climb on heading 192° to 760, for RADAR vectors to MMALT, thence. . . .
- TAKEOFF RUNWAY 32:** Climb on heading 320° to 760, for RADAR vectors to MMALT, thence. . . .

. . . on track 086° to MOOKI, then on (transition). Maintain ATC assigned altitude.
Expect filed altitude 10 minutes after departure.

- GUSTI TRANSITION (MMALT7.GUSTI)
- LAKE CHARLES TRANSITION (MMALT7.LCH)
- WHITE LAKE TRANSITION (MMALT7.LLA)

NOTE: Chart not to scale.

MMALT SEVEN DEPARTURE (RNAV)

HOUSTON, TEXAS

SC-5, 20 MAR 2025 to 17 APR 2025