

WAAS CH <b>86719</b>	APP CRS <b>012°</b>	Rwy Idg TDZE Apt Elev	<b>5000</b> <b>237</b> <b>245</b>
<b>W01A</b>			

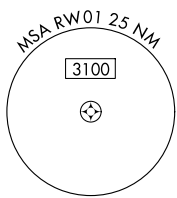
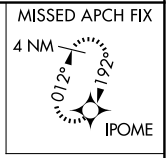
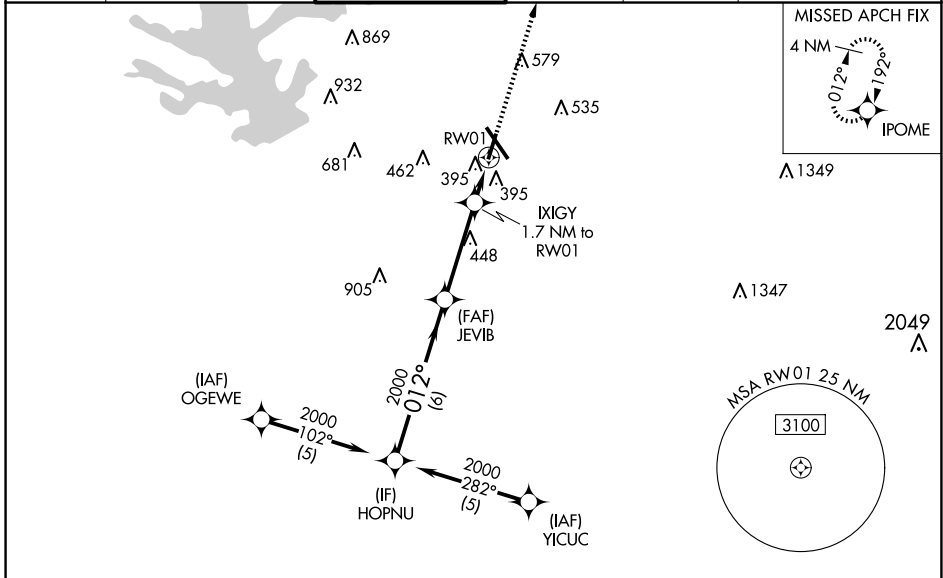
# RNAV (GPS) RWY 1

CONROE/NORTH HOUSTON RGNL (C XO)

**▽** For uncompensated Baro-VNAV systems, LNAV/VNAV NA below -15°C (5°F) or above 48°C (118°F). DME/DME RNP-0.3 NA.  
**⚠** Rwy 1 helicopter visibility reduction below ¾ SM NA.

MISSED APPROACH: Climb to 2000 direct IPOME and hold.

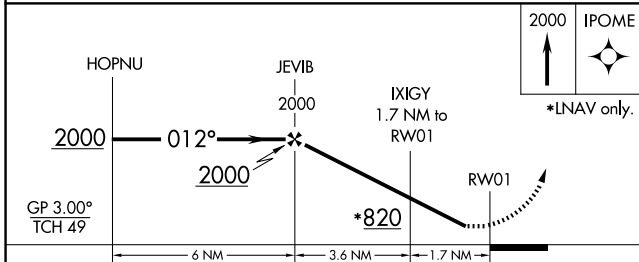
ATIS <b>118.325</b>	HOUSTON APP CON <b>119.7 281.4</b>	CONROE TOWER ★ <b>124.125 (CTAF) 0</b>	GND CON <b>120.45</b>	CLNC DEL <b>120.45</b>	CLNC DEL <b>119.55</b> (When twr closed)
------------------------	---------------------------------------	---	--------------------------	---------------------------	--



SC-5, 20 MAR 2025 to 17 APR 2025

SC-5, 20 MAR 2025 to 17 APR 2025

ELEV	245	TDZE	237
------	-----	------	-----



CATEGORY	A	B	C	D
LPV DA	521-1		284 (300-1)	
LNAV/VNAV DA	651-1½		414 (500-1½)	
LNAV MDA	660-1 423 (500-1)		660-1¼ 423 (500-1¼)	
CIRCLING	700-1 455 (500-1)		880-1¾ 635 (700-1¾) 960-2¼ 715 (800-2¼)	

