

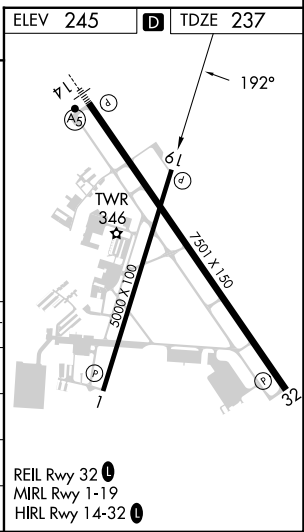
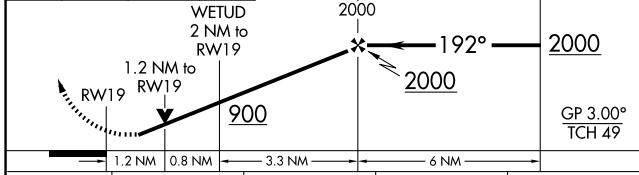
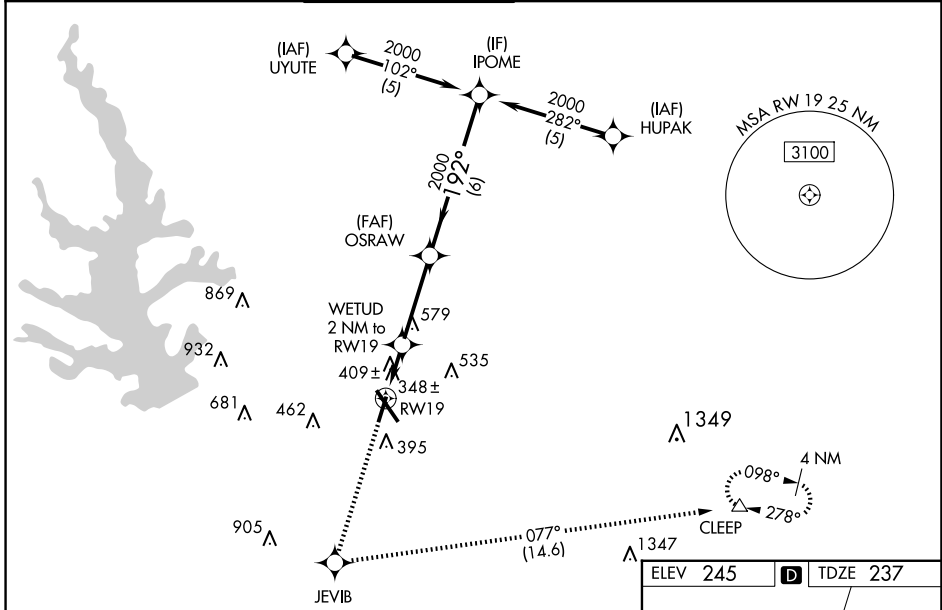
WAAS CH 90219 W19A	APP CRS 192°	Rwy Idg TDZE Apt Elev	5000 237 245
--	------------------------	-----------------------------	---

RNAV (GPS) RWY 19

CONROE/NORTH HOUSTON RGNL (C'XO)

RNP APCH - GPS.		<p>▼ Rwy 19 helicopter visibility reduction below 3/4 SM NA. For uncompensated Baro-VNAV systems, LNAV/VNAV NA below -15°C or above 54°C. When local altimeter setting not received, use David Wayne Hooks Meml altimeter setting and increase LPV DA to 584 feet and all visibilities 1/2 SM. Increase LNAV/VNAV DA to 739 feet; increase all MDAs 60 feet and LNAV visibility Cat C/D 1/2 SM, and Circling visibility Cat C/D 1/2 SM. Baro-VNAV and VDP NA when using David Wayne Hooks Meml altimeter setting.</p>		<p>MISSED APPROACH: Climb to 3100 direct JEVIB and left turn on track 077° to CLEEP and hold.</p>	
-----------------	--	--	--	--	--

ATIS 118.325	HOUSTON APP CON 119.7 281.4	CONROE TOWER ★ 124.125 (CTAF) 0	GND CON 120.45	CLNC DEL 120.45	CLNC DEL 119.55 (When twr closed)
------------------------	---------------------------------------	--	--------------------------	---------------------------	--



CATEGORY	A	B	C	D
LPV DA	527-1		290 (300-1)	
LNAV/VNAV DA	682-1 1/2		445 (500-1 1/2)	
LNAV MDA	660-1 423 (500-1)		660-1 1/4 423 (500-1 1/4)	
CIRCLING	700-1 455 (500-1)		880-1 3/4 635 (700-1 3/4) 960-2 1/4 715 (800-2 1/4)	

SC-5, 20 MAR 2025 to 17 APR 2025

SC-5, 20 MAR 2025 to 17 APR 2025