

WAAS CH 50237 W06A	APP CRS 062°	Rwy Idg TDZE Apt Elev	3300 9 9
--	------------------------	-----------------------------	-------------------------------------

RNAV (GPS) RWY 6

MARSHFIELD MUNI - GEORGE HARLOW FLD (GHG)

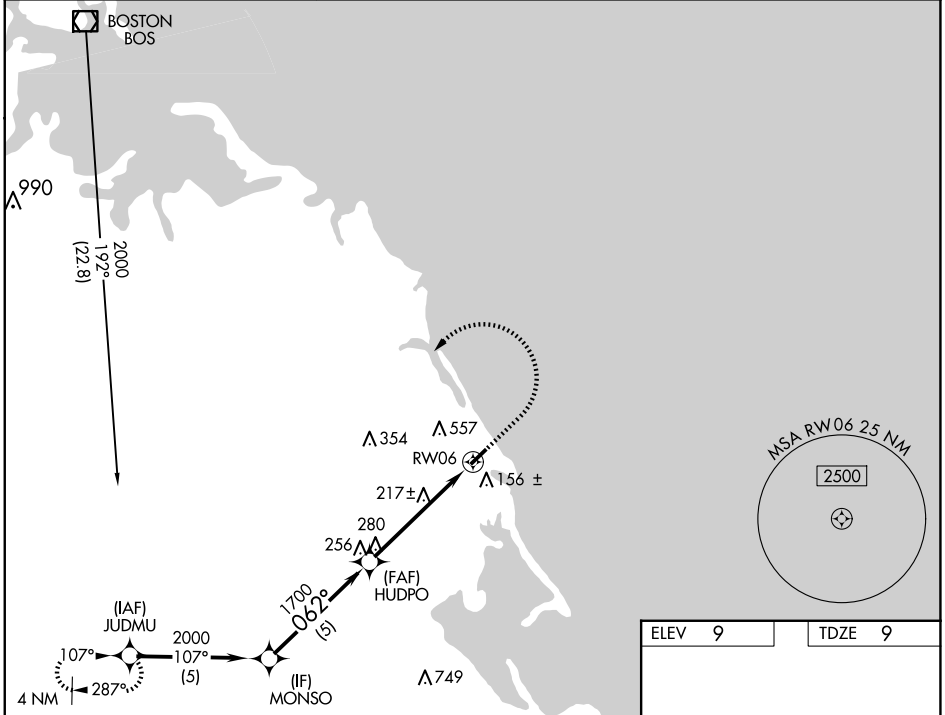
⚠ For uncompensated Baro-VNAV systems, LNAV/VNAV NA below -15°C (5°F) or above 54°C (130°F). DME/DME RNP-0.3 NA. Baro-VNAV and VDP NA when using Plymouth altimeter setting. Helicopter visibility reduction below ¾ SM NA. When local altimeter setting not received, use Plymouth altimeter setting and increase all DA 47 feet and all MDA 60 feet, increase LPV and LNAV/VNAV all Cats visibility ½ mile.

MISSED APPROACH: Climb to 800 then climbing left turn to 2000 direct JUDMU and hold.

AWOS-3
120.0

BOSTON APP CON
124.1

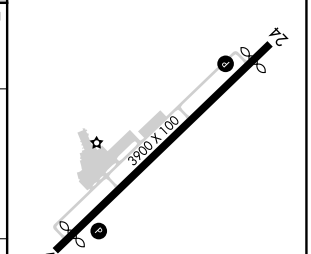
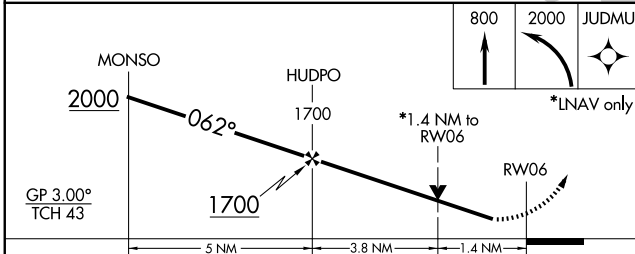
UNICOM
122.8 (CTAF) 0



NE-1, 20 MAR 2025 to 17 APR 2025

NE-1, 20 MAR 2025 to 17 APR 2025

ELEV 9	TDZE 9
--------	--------



CATEGORY	A	B	C	D
LPV DA	282-7/8	273 (300-7/8)		NA
LNAV/VNAV DA	445-1/2	436 (500-1/2)		NA
LNAV MDA	480-1	471 (500-1)		NA
CIRCLING	500-1 491 (500-1)	880-1 1/4 871 (900-1 1/4)		NA

REIL Rwy 6 and 24
MIRL Rwy 6-24