

LOC/DME I-FGH <b>109.35</b> Chan <b>30 (Y)</b>	APP CRS <b>041°</b>	Rwy Idg <b>4775</b> TDZE <b>58</b> Apt Elev <b>72</b>
--	------------------------	---

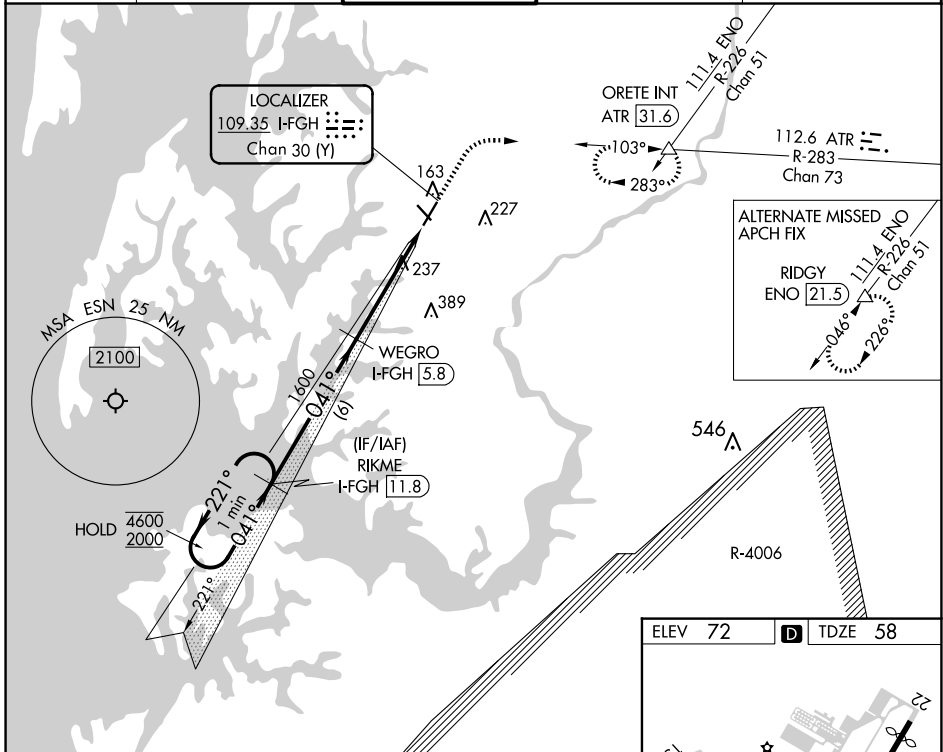
**ILS or LOC RWY 4**  
EASTON/NEWNAM FLD (ESN)

RADAR and DME required for procedure entry. DME required for LOC only.

**▽** Circling Rwy 15, 33 NA at night. Autopilot coupled approach NA below 1000.

MISSED APPROACH: Climb to 2000 on heading 041° and on ATR VOR/DME R-283 to ORETE INT/ATR 31.6 DME and hold.

ATIS <b>124.475</b>	POTOMAC APP CON <b>133.75 254.35</b>	EASTON TOWER * <b>118.525 (CTAF) 0</b>	GND CON <b>119.075</b>	CLNC DEL <b>119.075</b>
------------------------	---	---	---------------------------	----------------------------



NE-3, 20 MAR 2025 to 17 APR 2025

NE-3, 20 MAR 2025 to 17 APR 2025

One Minute Holding Pattern		GS unusable below 600.	2000	ATR R-283	ORETE
4600 ← 221°		RIKME I-FGH 11.8	↑ hdg 041°	△	
2000 → 041°		WEGRO I-FGH 5.8	* I-FGH 2.5		* LOC only
GS 3.00° TCH 44		1600	I-FGH 1		
		6 NM	3.4 NM	1.4 NM	
CATEGORY	A	B	C	D	
S-ILS 4		600-1 5/8	542 (600-1 5/8)		
S-LOC 4	540-1	482 (500-1)	540-1 3/8	482 (500-1 3/8)	
CIRCLING	540-1 468 (500-1)	640-1 568 (600-1)	640-1 1/2 568 (600-1 1/2)	740-2 1/4 668 (700-2 1/4)	

ELEV 72 | TDZE 58

HIRL Rwy 4-22  
REIL Rws 15, 22 and 33  
MIRL Rws 15-33