

APP CRS 328°	Rwy Idg 4003
	TDZE 51
	Apt Elev 72

RNAV (GPS) RWY 33

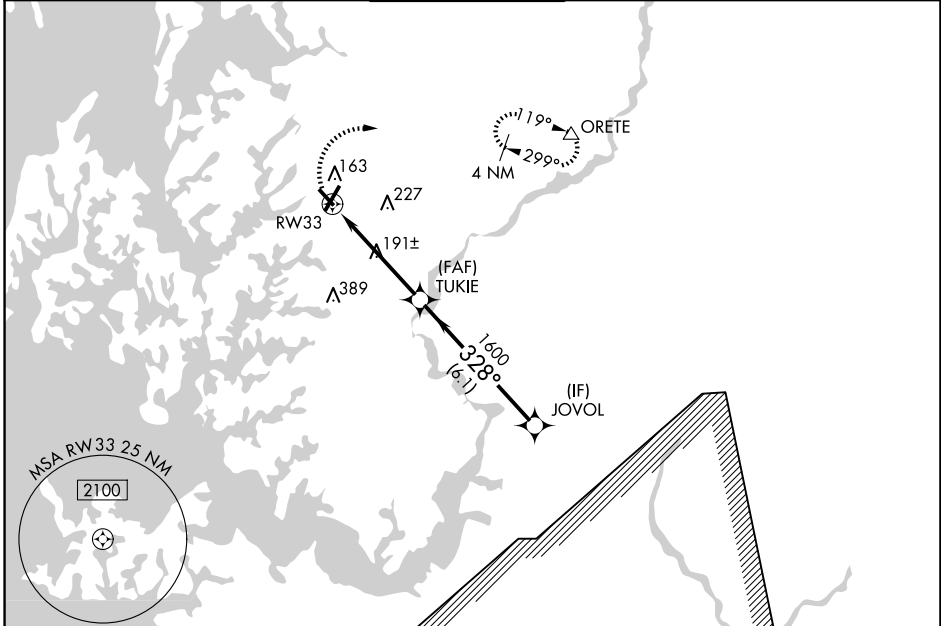
EASTON/NEWNAM FLD (E/SN)

RNP APCH.

▼ Straight-in Rwy 33 NA at night, Circling Rwy 15, 33 NA at night.
Helicopter visibility reduction below 1 SM NA.

MISSED APPROACH:
Climbing right turn to 2000
direct ORETE and hold.

ATIS 124.475	POTOMAC APP CON 133.75 254.35	EASTON TOWER ★ 118.525 (CTAF) 0	GND CON 119.075	CLNC DEL 119.075
------------------------	---	--	---------------------------	----------------------------



NE-3, 20 MAR 2025 to 17 APR 2025

NE-3, 20 MAR 2025 to 17 APR 2025

ELEV 72 TDZE 51

Diagram of RWY 33 showing taxiway (TW) and obstacle data: 0.5% UP, 0.7% UP, 4003 x 100, 5500 x 100, 328°.

HIRL Rwy 4-22
REIL Rws 22, 15 and 33
MIRL Rwy 15-33

R-4006 1048

2000 ORETE Visual Segment - Obstacles.

JOVOL TUKIE RWY 33

1600 328° 4.7 NM 6.1 NM

CATEGORY	A	B	C	D
LNAV MDA	520-1	469 (500-1)	520-1 3/8 469 (500-1 3/8)	520-1 1/2 469 (500-1 1/2)
C CIRCLING	520-1 448 (500-1)	640-1 568 (600-1)	640-1 1/2 568 (600-1 1/2)	740-2 668 (700-2)