

WAAS CH <b>86905</b> <b>W04A</b>	APP CRS <b>040°</b>	Rwy Idg <b>4775</b> TDZE <b>58</b> Apt Elev <b>72</b>
--	------------------------	---

# RNAV (GPS) RWY 4

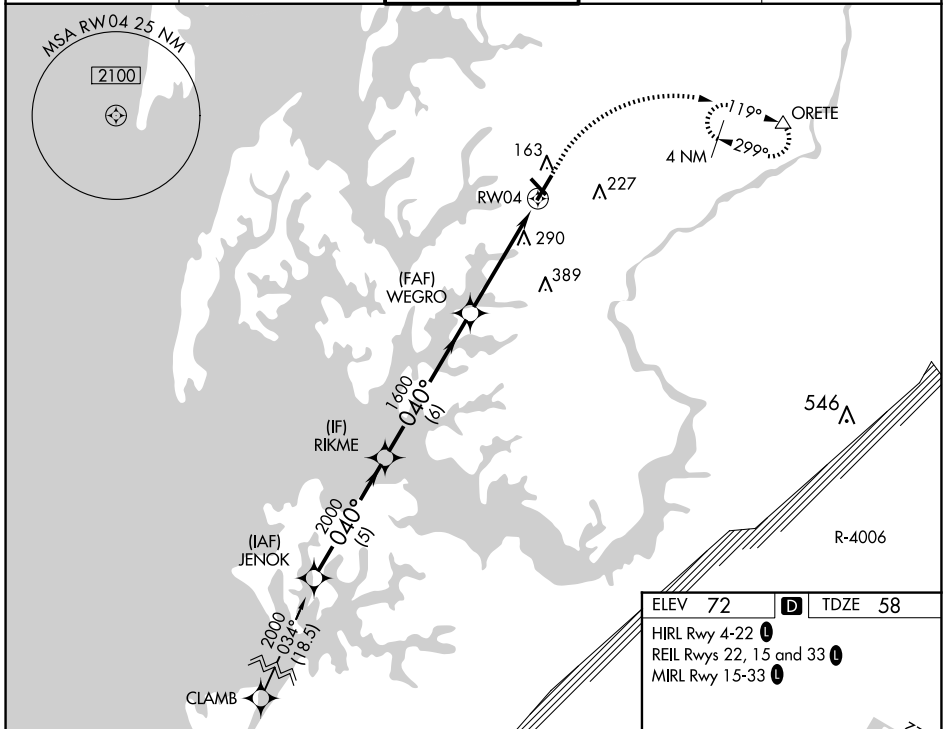
EASTON/NEWNAM FLD (ESN)

RNP APCH - GPS.

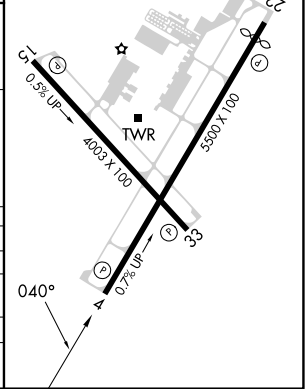
**⚠** When local altimeter setting not received, use Cambridge altimeter setting; increase LPV DA to 303 feet, LNAV/VNAV DA to 670 feet and visibility 1/8 SM; increase all MDA's 60 feet and visibility LNAV Cat C/D and Circling Cat C 1/8 SM, and Circling Cat D 1/4 SM. VDP and Baro-VNAV NA when using Cambridge altimeter setting. Circling Rwy 15, 33 NA at night. For uncompensated Baro-VNAV systems, LNAV/VNAV NA below -15°C or above 54°C.

**⚠ MISSED APPROACH:** Climb to 700 then climbing right turn to 2000 direct ORETE and hold.

ATIS <b>124.475</b>	POTOMAC APP CON <b>133.75 254.35</b>	EASTON TOWER ★ <b>118.525</b> (CTAF) <b>0</b>	GND CON <b>119.075</b>	CLNC DEL <b>119.075</b>
------------------------	---	--	---------------------------	----------------------------



	JENOK	RIKME	WEGRO	RW04	ORETE
	2000	2000	1600	1600	700
	040°	040°			040°
GP 3.00° TCH 44					
	5 NM	6 NM	3.1 NM	1.6 NM	
CATEGORY	A	B	C	D	
LPV DA		258-3/4	200 (200-3/4)		
LNAV/VNAV DA		625-1 1/8	567 (600-1 1/8)		
LNAV MDA	600-1	542 (600-1)	600-1 1/8	542 (600-1 1/8)	
CIRCLING	600-1 528 (600-1)	640-1 568 (600-1)	640-1 1/8 568 (600-1 1/8)	740-2 668 (700-2)	



NE-3, 20 MAR 2025 to 17 APR 2025

NE-3, 20 MAR 2025 to 17 APR 2025