

| | |
|------------------------|------------------------|
| APP CRS 214° | Rwy Idg 5000 |
| | TDZE 48 |
| | Apt Elev 48 |

RNAV (GPS) RWY 21

ACCOMACK COUNTY (MFLV)

RNP APCH - GPS.

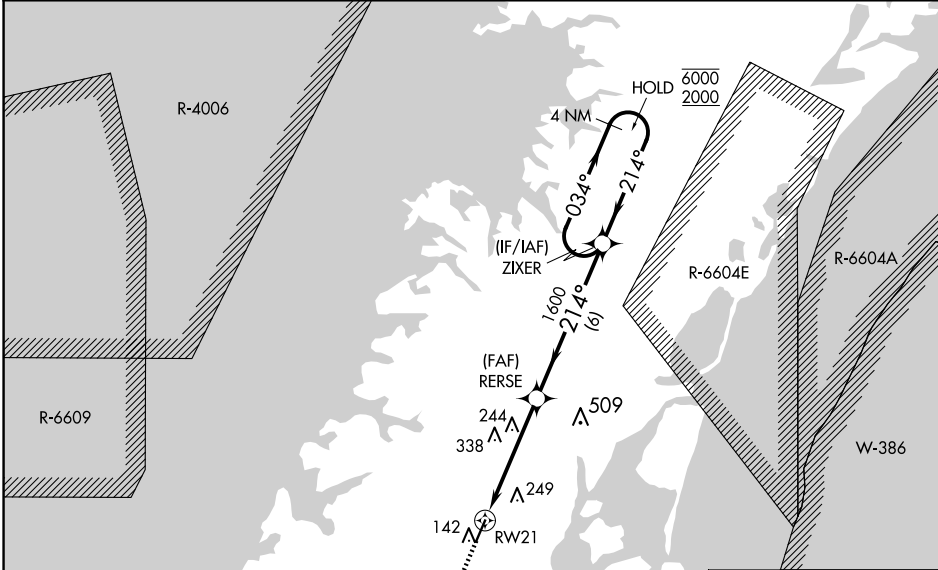
⚠ Rwy 21 helicopter visibility reduction below 3/4 SM NA.

MISSED APPROACH: Climb to 2000 direct UCGEL and hold.

AWOS-3
118.175

PATUXENT APP CON *
127.95 314.0

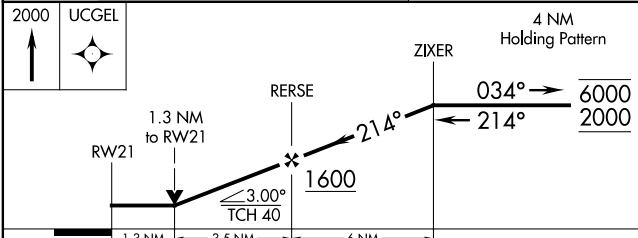
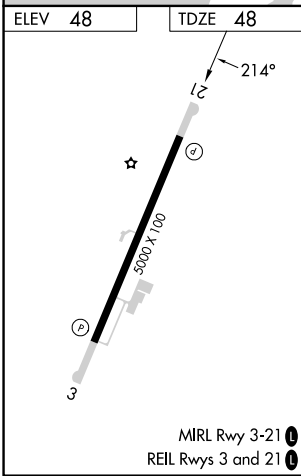
UNICOM
122.8 (CTAF) 0



NE-3, 20 MAR 2025 to 17 APR 2025

NE-3, 20 MAR 2025 to 17 APR 2025

Procedure NA for arrivals at OUTLA on T303 southbound and T307 southwest bound.



| CATEGORY | A | B | C | D |
|-----------------|-------------|-------------|-----------------|-----------------|
| LNNAV MDA | 500-1 | 452 (500-1) | 500-1 3/8 | 452 (500-1 3/8) |
| CIRCLING | 500-1 | 560-1 | 700-1 3/4 | 700-2 |
| | 452 (500-1) | 512 (600-1) | 652 (700-1 3/4) | 652 (700-2) |