

VORTAC MCB <b>116.7</b> Chan <b>114</b>	APP CRS <b>233°</b>	Rwy Idg TDZE Apt Elev <b>N/A</b> <b>N/A</b> <b>413</b>
-----------------------------------------------	------------------------	-----------------------------------------------------------------------

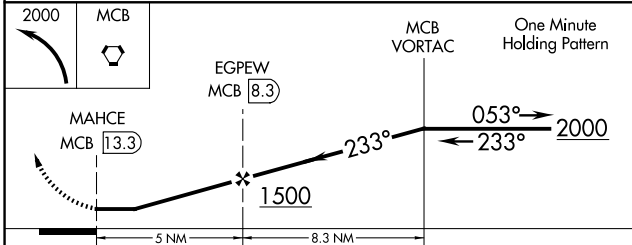
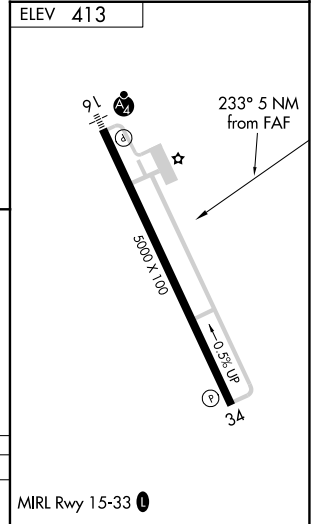
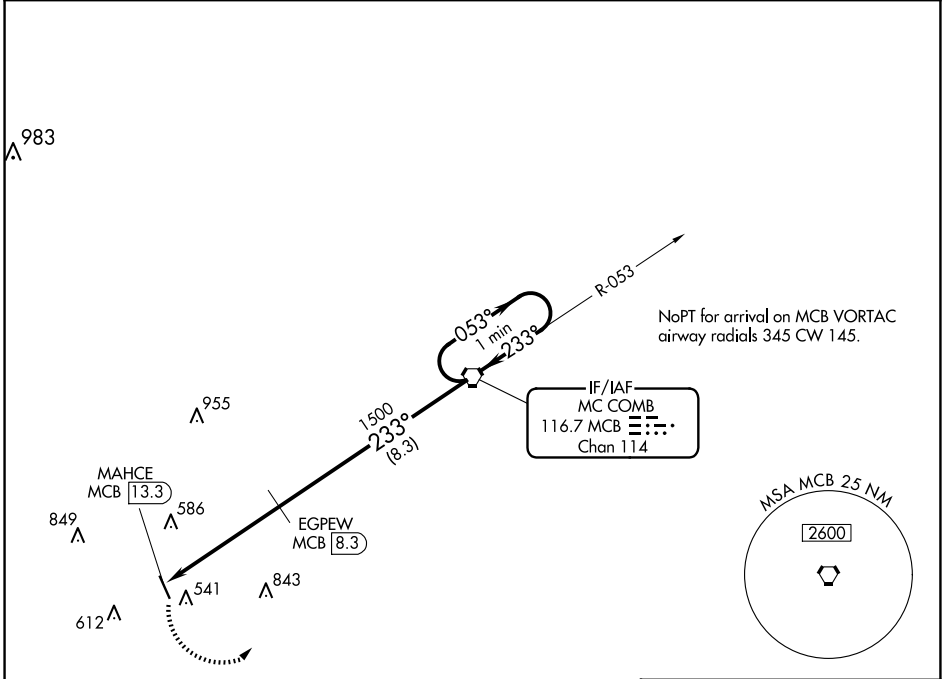
# VOR/DME-A

MC COMB/PIKE COUNTY/JOHN E LEWIS FLD (MCB)

**⚠** When local altimeter setting not received, use Natchez altimeter setting and increase MDA 140 feet and Cat C and D visibility 1/4 mile.

**MISSED APPROACH:** Climbing left turn to 2000 direct MCB VORTAC and hold

ASOS <b>119.025</b>	HOUSTON CENTER <b>126.8 327.8</b>	UNICOM <b>123.05 (CTAF) 0</b>
------------------------	--------------------------------------	----------------------------------



CATEGORY	A	B	C	D
<b>C</b> CIRCLING	880-1	467 (500-1)	940-1½ 527 (600-1½)	1160-2½ 747 (800-2½)

MIRL Rwy 15-33 0

SC-4, 20 MAR 2025 to 17 APR 2025

SC-4, 20 MAR 2025 to 17 APR 2025