

WAAS CH <b>45507</b> <b>W15A</b>	APP CRS <b>153°</b>	Rwy Idg TDZE Apt Elev	<b>6001</b> <b>82</b> <b>82</b>
--	------------------------	-----------------------------	---------------------------------------

# RNAV (GPS) RWY 15

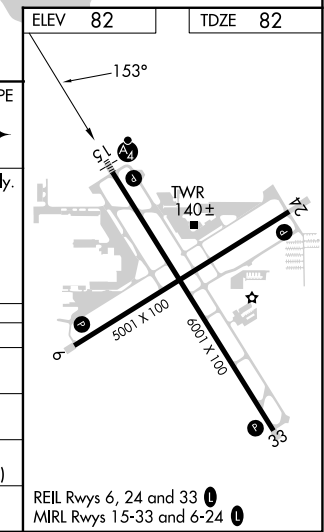
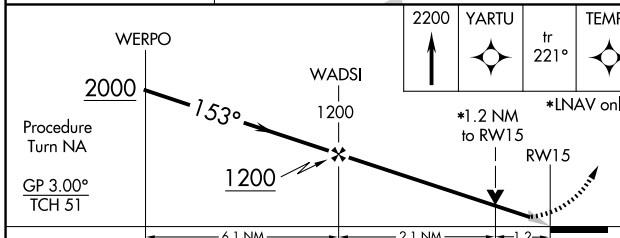
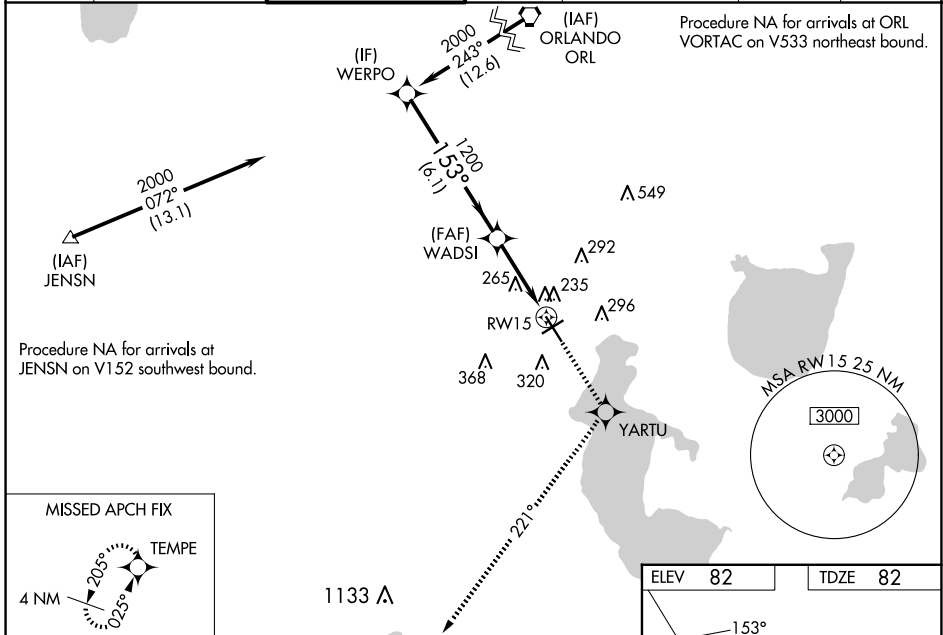
KISSIMMEE GATEWAY (ISM)

**⚠** For uncompensated Baro-VNAV systems, LNAV/VNAV NA below -15°C (5°F) or above 48°C (118°F). DME/DME RNP-0.3 NA. VDP and Baro-VNAV NA when using Orlando Intl altimeter setting. Inoperative table does not apply to LNAV/VNAV all Cats and LNAV Cat C. When local altimeter setting not received, use Orlando Intl altimeter setting and increase LPV DA all Cats to 309, LNAV/VNAV DA all Cats to 559, and all MDA 40 feet; increase LNAV/VNAV all Cats and Circling Cat C visibility ¼ mile.

**MALSF**

**MISSED APPROACH:** Climb to 2200 direct YARTU and on track 221° to TEMPE and hold

ATIS <b>128.775</b>	ORLANDO APP CON <b>119.4 351.9</b>	KISSIMMEE TOWER * <b>124.45</b> (CTAF)	CLNC DEL <b>121.7</b>	CLNC DEL <b>123.95</b> (when twr closed)	GND CON <b>121.7</b>	UNICOM <b>122.95</b>
------------------------	---------------------------------------	---	--------------------------	--	-------------------------	-------------------------



CATEGORY	A	B	C	D
LPV DA	282-¾		200 (200-¾)	
LNAV/VNAV DA	532-1½		450 (500-1½)	
LNAV MDA	520-¾	438 (500-¾)	520-1¼ 438 (500-1¼)	520-1½ 438 (500-1½)
CIRCLING	680-1	598 (600-1)	680-1½ 598 (600-1½)	700-2 618 (700-2)