

LOC/DME I-DZH <b>109.95</b> Chan <b>36</b> (Y)	APP CRS <b>038°</b>	Rwy ldg <b>5000</b> TDZE <b>316</b> Apt Elev <b>316</b>
--	------------------------	---

# LOC RWY 4

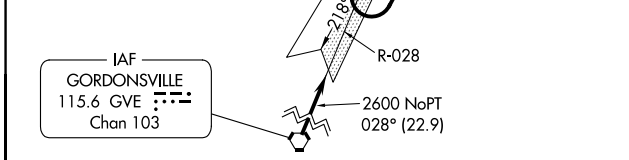
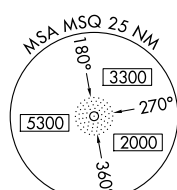
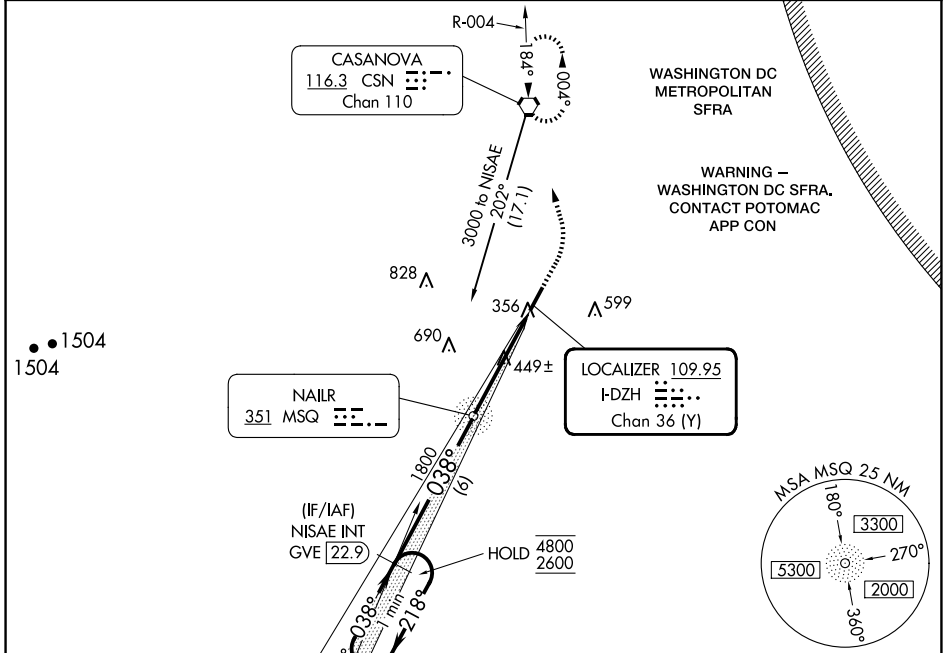
CULPEPER RGNL (CJR)

ADF required.

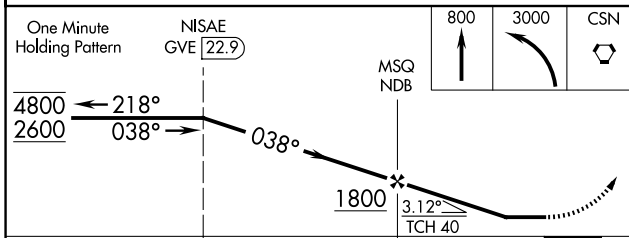
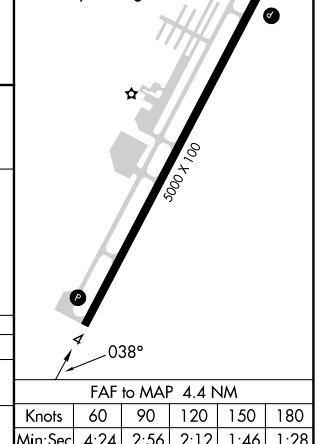
Straight-in Rwy 4 at night, Circling Rwy 4, 22 at night, operational  
 VGSi required, remain on or above VGSi glidepath until threshold.

MISSED APPROACH: Climb to 800 then climbing left turn to 3000 direct CSN VORTAC and hold, continue climb-in-hold to 3000.

AWOS-3 <b>119.325</b>	POTOMAC APP CON <b>128.525 306.925</b>	CLNC DEL <b>121.6</b>	UNICOM <b>123.075</b> (CTAF)
--------------------------	---	--------------------------	---------------------------------



ELEV 316	TDZE 316
REIL Rwy 4 and 22	
MIRL Rwy 4-22	



CATEGORY	A	B	C	D
S-4	700-1 384 (400-1)			NA
CIRCLING	920-1 604 (700-1)	960-1 644 (700-1)	960-1 ¾ 644 (700-1 ¾)	NA

FAF to MAP 4.4 NM					
Knots	60	90	120	150	180
Min:Sec	4:24	2:56	2:12	1:46	1:28

NE-3, 20 MAR 2025 to 17 APR 2025

NE-3, 20 MAR 2025 to 17 APR 2025