

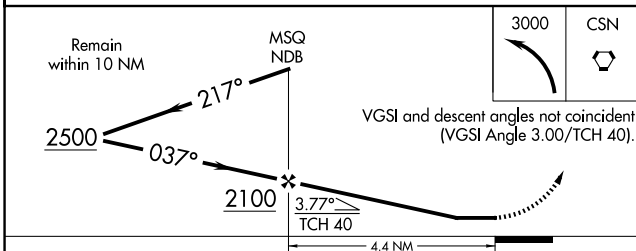
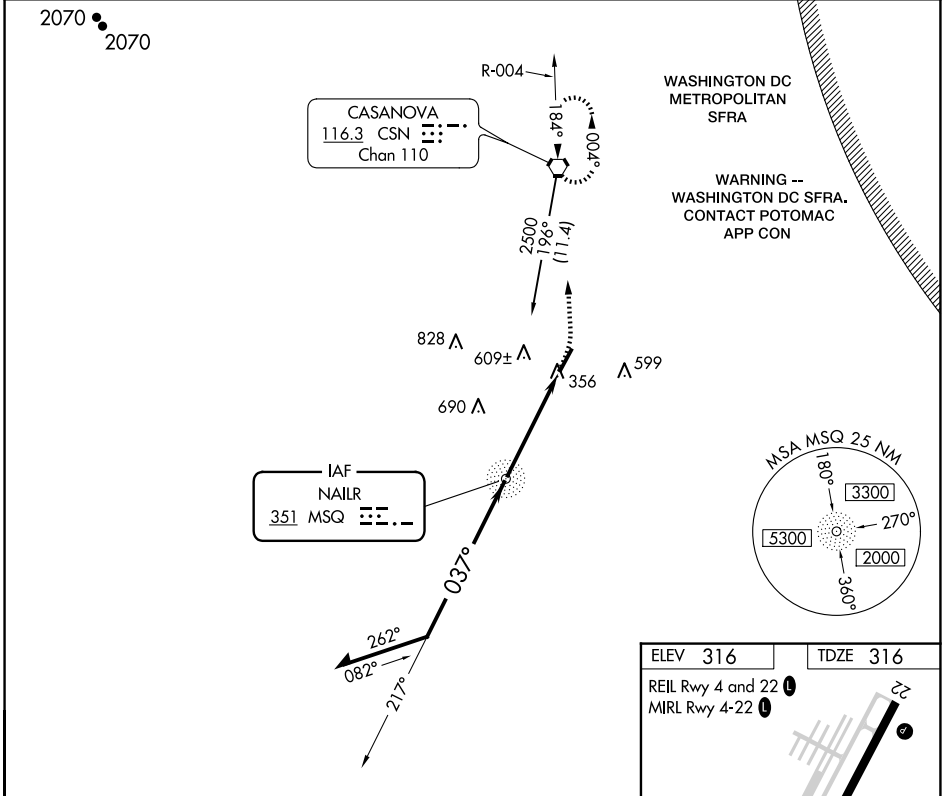
NDB MSQ	APP CRS	Rwy Idg	5000
351	037°	TDZE	316
		Apt Elev	316

NDB RWY 4

CULPEPER RGNL (CJR)

⚠ Straight-in Rwy 4 at night, Circling Rwy 4, 22 at night, operational VGSI required, remain on or above VGSI glidepath until threshold.
⚠ MISSED APPROACH: Climbing left turn to 3000 direct CSN VORTAC and hold, continue climb-in-hold to 3000.

AWOS-3 119.325	POTOMAC APP CON 128.525 306.925	CLNC DEL 121.6	UNICOM 123.075 (CTAF) 📻
--------------------------	---	--------------------------	--



ELEV 316	TDZE 316
REIL Rwy 4 and 22 📻	MIRL Rwy 4-22 📻

FAF to MAP 4.4 NM
 Knots: 60 90 120 150 180
 Min:Sec: 4:24 2:56 2:12 1:46 1:28

NE-3, 20 MAR 2025 to 17 APR 2025

NE-3, 20 MAR 2025 to 17 APR 2025