

LINDZ ONE DEPARTURE

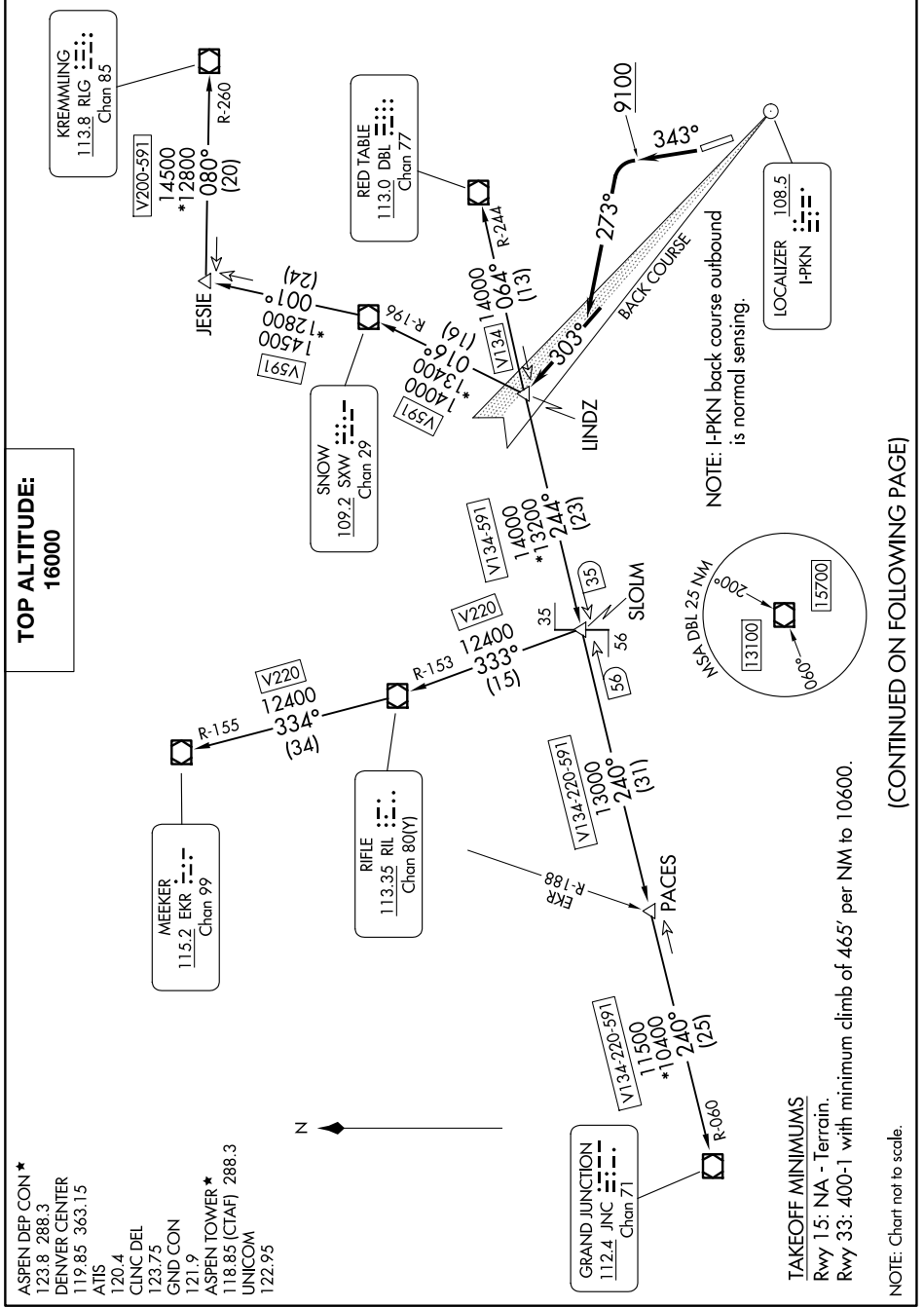
AL-5889 (FAA)

ASPEN-PITKIN COUNTY/SARDY FLD (ASE)
ASPEN, COLORADO

SW-1, 20 MAR 2025 to 17 APR 2025

**TOP ALTITUDE:
16000**

- ASPEN DEP CON *
123.8 288.3
- DENVER CENTER
119.85 363.15
- ATIS
120.4
- CLNC DEL
123.75
- GND CON
121.9
- ASPEN TOWER *
118.85 (CTAF) 288.3
- UNICOM
122.95



(CONTINUED ON FOLLOWING PAGE)

SW-1, 20 MAR 2025 to 17 APR 2025

LINDZ ONE DEPARTURE

(LINDZ1.LINDZ) 16MAY24

ASPEN, COLORADO
ASPEN-PITKIN COUNTY/SARDY FLD (ASE)

TAKEOFF MINIMUMS
Rwy 15: NA - Terrain.
Rwy 33: 400-1 with minimum climb of 465' per NM to 10600.

NOTE: Chart not to scale.