

(PITKN5.GLENO) 24137

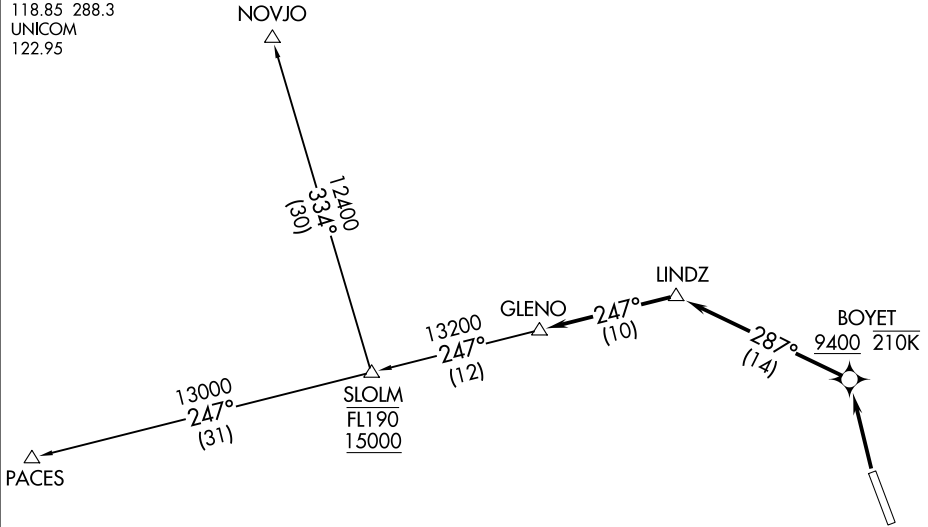
PITKN FIVE DEPARTURE (RNAV)

ASPEN-PITKIN COUNTY/SARDY FLD (ASE)
AL-5889 (FAA) ASPEN, COLORADO

ASPEN DEP CON ★
123.8 288.3
DENVER CENTER
119.85 363.15
ATIS
120.4
CLNC DEL
123.75
GND CON
121.9
ASPEN TOWER ★
118.85 288.3
UNICOM
122.95

RNAV 1 - GPS.

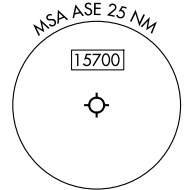
**TOP ALTITUDE:
16000**



TAKEOFF MINIMUMS

Rwy 15: NA - Environmental.
Rwy 33: 300-1 with minimum climb of 500'/NM to 11200.

NOTE: Chart not to scale.



DEPARTURE ROUTE DESCRIPTION

TAKEOFF RUNWAY 33: Climb direct BOYET to cross at or above 9400 and at or below 210K, then on track 287° to LINDZ, then on track 247° to GLENO, thence. . . .

. . . .on transition or assigned route, maintain 16000, expect clearance to filed altitude 10 minutes after departure.

NOVJO TRANSITION (PITKN5.NOVJO)

PACES TRANSITION (PITKN5.PACES)

PITKN FIVE DEPARTURE (RNAV)

(PITKN5.GLENO) 16MAY24

ASPEN, COLORADO
ASPEN-PITKIN COUNTY/SARDY FLD (ASE)

SW-1, 20 MAR 2025 to 17 APR 2025

SW-1, 20 MAR 2025 to 17 APR 2025