

APP CRS 166°	Rwy Idg TDZE Apt Elev	N/A N/A 7838
------------------------	-----------------------------	---

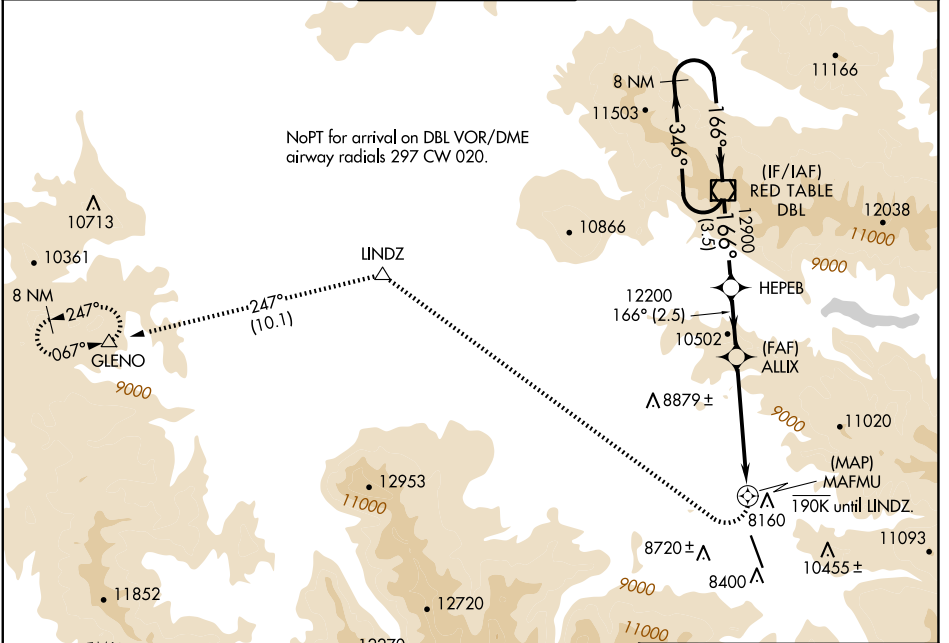
RNAV (GPS)-F

ASPEN-PITKIN COUNTY/SARDY FLD (A5E)

When local altimeter setting not received, procedure NA.
 DME/DME RNP-0.3 NA. Visibility reduction by helicopters NA.
 Procedure NA at night. Circling NA for Cat C southwest of Rwy 15-33.

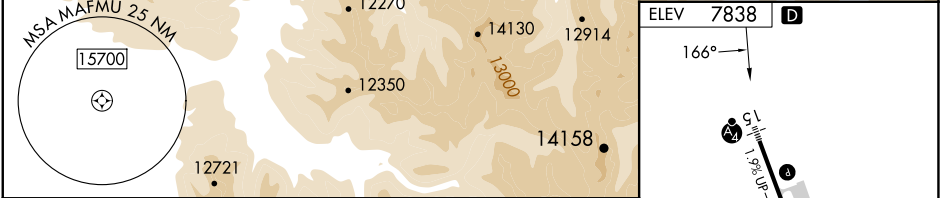
MISSED APPROACH: Climbing right turn to 14000 direct LINDZ and on track 247° to GLENO and hold.

ATIS 120.4	ASPEN APP CON ★ 123.8 288.3	ASPEN TOWER ★ 118.85 (CTAF) 288.3	GND CON 121.9	CLNC DEL 123.75	UNICOM 122.95
----------------------	---------------------------------------	---	-------------------------	---------------------------	-------------------------

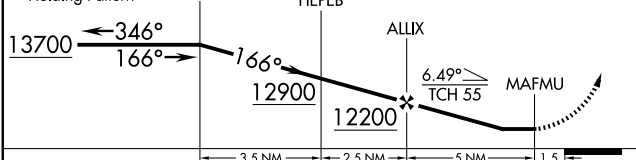


SW-1, 20 MAR 2025 to 17 APR 2025

SW-1, 20 MAR 2025 to 17 APR 2025



VGSIs and descent angles not coincident (VGSi Angle 3.50/TCH 55). 8 NM Holding Pattern DBL VOR/DME HEPEB	14000	LINDZ	tr 247°	GLENO
		△		△



CATEGORY	A	B	C	D
CIRCLING	10200-1¾ 2362 (2400-1¾)	10220-1¾ 2382 (2400-1¾)	10960-3 3122 (3200-3)	NA

ELEV 7838	D
REIL Rwy 15	1
REIL Rwy 33	1
MIRL Rwy 15-33	1