

APP CRS 329°	Rwy Idg 4004
	TDZE 811
	Apt Elev 811

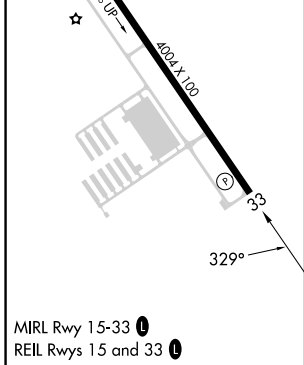
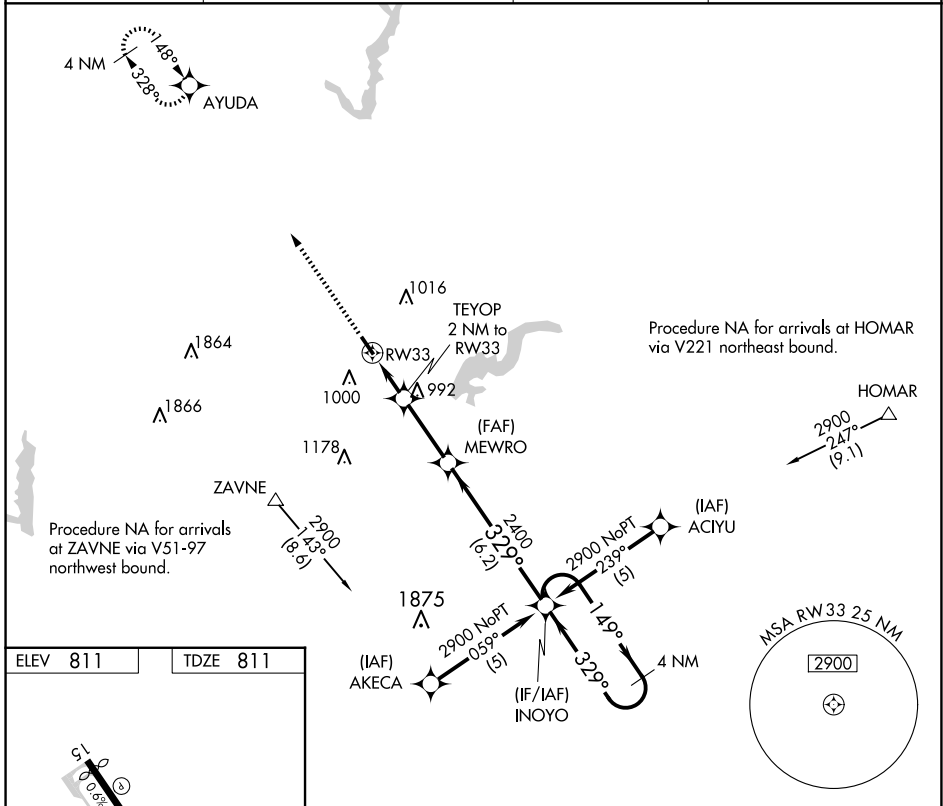
RNAV (GPS) RWY 33

INDIANAPOLIS METRO (UMP)

▽ DME/DME RNP-0.3 NA. When local altimeter setting not received, use Indianapolis Intl altimeter setting and increase all MDA 60 feet and LNAV Cat C visibility ¼ mile. VDP NA when using Indianapolis Intl altimeter setting. Rwy 33 helicopter visibility reduction below ¾ SM NA.

△ NA MISSED APPROACH: Climb to 2500 direct AYUDA and hold.

AWOS-3PT 119.375	INDIANAPOLIS APP CON 127.15 317.8	CLNC DEL 121.625	UNICOM 123.0 (CTAF) 0
----------------------------	---	----------------------------	---------------------------------



2500	AYUDA	VGSIs and descent angles not coincident (VGSi Angle 3.50/TCH 27).		INOYO	4 NM Holding Pattern	
		TEYOP 2 NM to RWY 33	MEWRO	INOYO		
		RWY 33	1.1 NM to RWY 33	1480	149°	
			≤3.04° TCH 40	2400	329°	
			1.1 NM	0.9 NM	2.8 NM	6.2 NM
CATEGORY	A	B	C	D		
LNAV MDA	1260-1	449 (500-1)	1260-1¼ 449 (500-1¼)	NA		
C CIRCLING	1320-1 509 (600-1)	1340-1 529 (600-1)	1340-1½ 529 (600-1½)	NA		

EC-2, 20 MAR 2025 to 17 APR 2025

EC-2, 20 MAR 2025 to 17 APR 2025