

WAAS CH 77810 W17A	APP CRS 162°	Rwy Ldg 5003 TDZE 117 Apt Elev 121
--	------------------------	---

RNAV (GPS) RWY 17

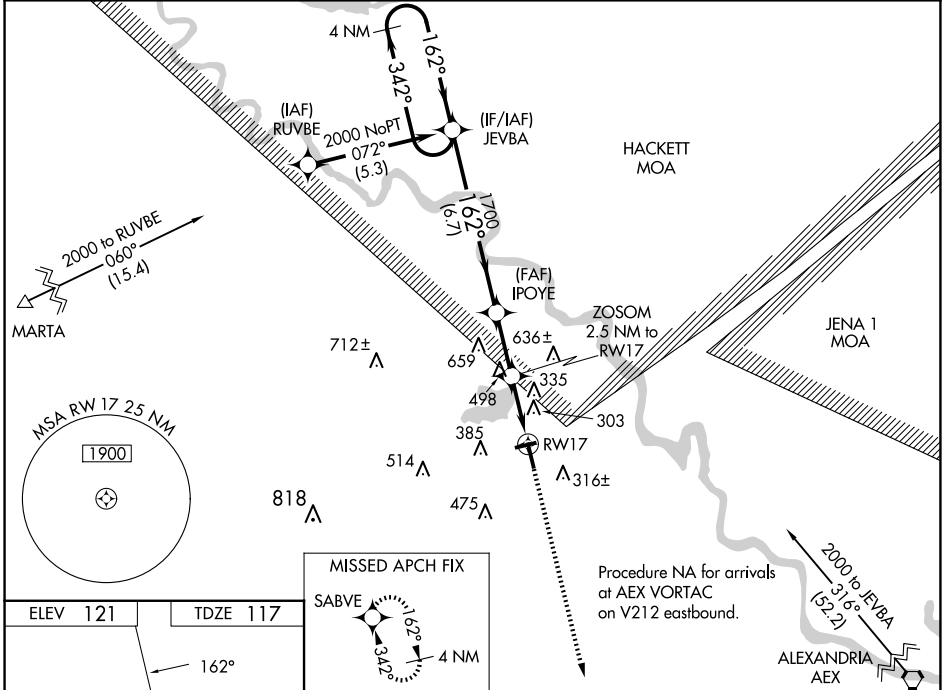
NATCHITOCHES RGNL (IER)

RNP APCH.

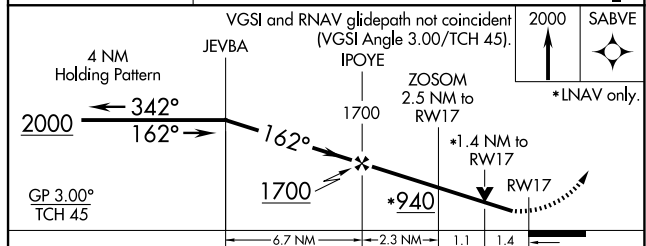
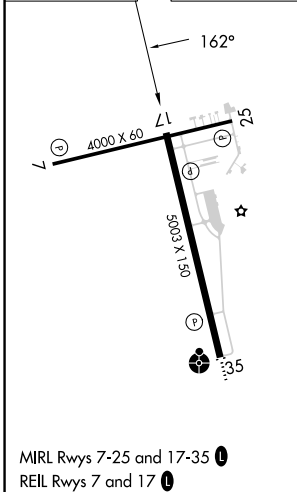
▼ For uncompensated Baro-VNAV systems, LNAV/VNAV NA below -15°C or above 54°C.
 ▲ Visibility reduction by helicopters NA. When local altimeter setting not received, use Alexandria Intl altimeter setting: Increase LPV DA to 458 feet and visibility all Cats 3/8 SM; increase LNAV/VNAV DA to 749 feet and visibility all Cats 3/8 SM; increase all MDA 100 feet and LNAV Cat C visibility 3/8 SM and Circling Cat C visibility 1/2 SM. Baro-VNAV and VDP NA when using Alexandria Intl altimeter setting.

MISSED APPROACH: Climb to 2000 direct SABVE and hold.

AWOS-3 119,025	POLK APP CON 125.4 302.2	GCO 135,075	UNICOM 122.8 (CTAF) 0
--------------------------	------------------------------------	-----------------------	---------------------------------



ELEV 121	TDZE 117
-----------------	-----------------



CATEGORY	A	B	C	D
LPV DA	367-3/4	250 (300-3/4)		NA
LNAV/VNAV DA	658-1 7/8	541 (600-1 1/8)		NA
LNAV MDA	620-1	503 (500-1)	620-1 3/8 503 (500-1 1/8)	NA
CIRCLING	800-1	679 (700-1)	860-2 739 (800-2)	NA