

WAAS CH <b>63027</b> <b>W36A</b>	APP CRS <b>360°</b>	Rwy Idg TDZE Apt Elev	<b>4501</b> <b>1324</b> <b>1326</b>
--	------------------------	-----------------------------	---

# RNAV (GPS) RWY 36

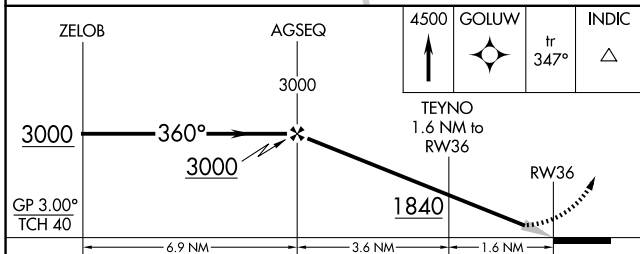
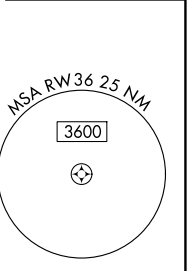
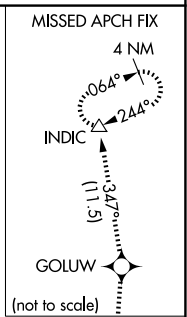
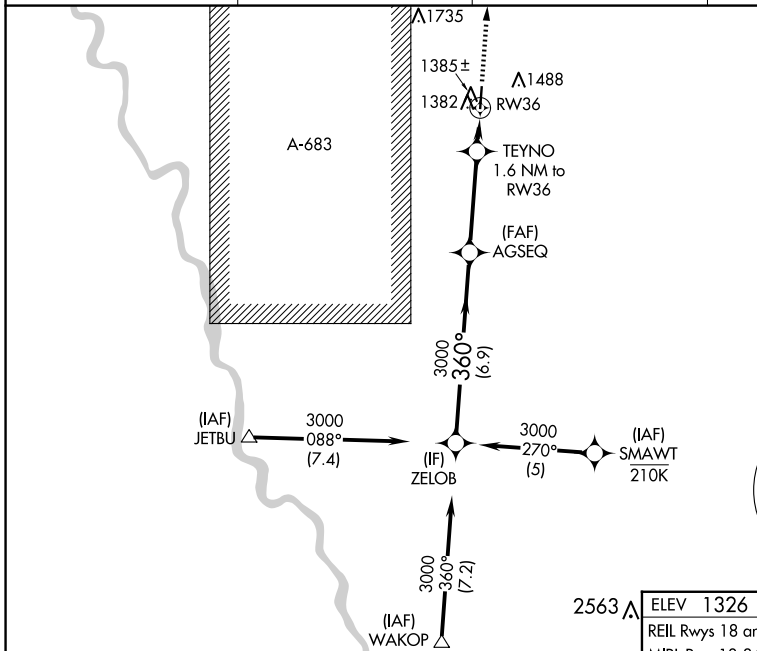
AUGUSTA MUNI (3AU)

RNP APCH - GPS.

**⚠** For uncompensated Baro-VNAV systems, LNAV/VNAV NA below -17°C or above 54°C. Baro-VNAV NA when using AAO altimeter setting. When local altimeter setting not received, use AAO altimeter setting and increase LPV DA to 1557 feet; increase LNAV/VNAV DA to 1607 feet. Increase all MDAs 40 feet and LNAV visibility Cat C ½ SM.

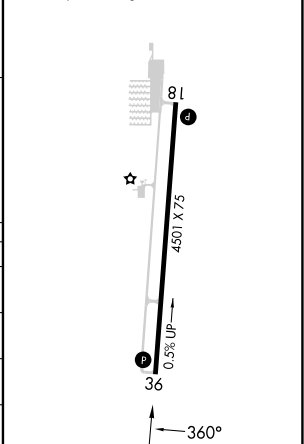
MISSED APPROACH: Climb to 4500 direct GOLUW and on track 347° to INDIC and hold.

AWOS-3P <b>124.175</b>	WICHITA APP CON <b>134.8 269.1</b>	CLNC DEL <b>125.0</b>	UNICOM <b>122.8 (CTAF)</b>
---------------------------	---------------------------------------	--------------------------	-------------------------------



ELEV 1326	TDZE 1324
REIL Rwys 18 and 36	
MIRL Rwy 18-36	

CATEGORY	A	B	C	D
LPV DA		1524-1 200 (200-1)		NA
LNAV/VNAV DA		1574-1 250 (300-1)		NA
LNAV MDA		1700-1 376 (400-1)		NA
CIRCLING	1800-1 474 (500-1)	1820-1 494 (500-1)	1820-1½ 494 (500-1½)	NA



NC-2, 20 MAR 2025 to 17 APR 2025

NC-2, 20 MAR 2025 to 17 APR 2025