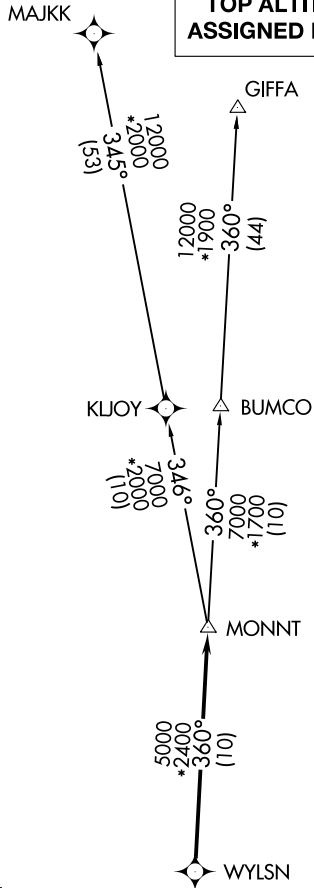


# WYLSN EIGHT DEPARTURE (RNAV)

HOUSTON DEP CON  
128.6 360.85

NOTE: RADAR required.  
NOTE: DME/DME/IRU or GPS required.  
NOTE: RNAV 1.

**TAKEOFF MINIMUMS**  
Rwy 14, 32: Standard with minimum  
climb of 500' per NM to 600.



**TOP ALTITUDE:  
ASSIGNED BY ATC**

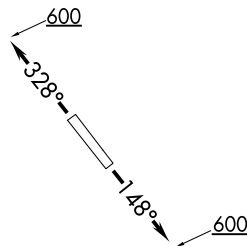
## DEPARTURE ROUTE DESCRIPTION

TAKEOFF RUNWAY 14: Climb on heading 148° to 600 for RADAR vectors to WYLSN, thence. . . .

TAKEOFF RUNWAY 32: Climb on heading 328° to 600 for RADAR vectors to WYLSN, thence. . . .

. . . .on track 360° to MONNT, then on (transition).  
Maintain ATC assigned altitude. Expect filed altitude 10 minutes after departure.

GIFFA TRANSITION (WYLSN8.GIFFA)  
MAJKK TRANSITION (WYLSN8.MAJKK)



NOTE: Chart not to scale.

# WYLSN EIGHT DEPARTURE (RNAV)