

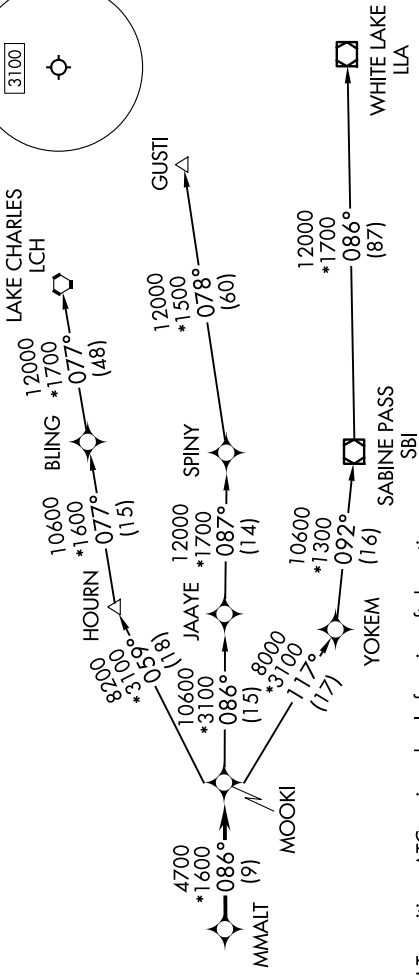
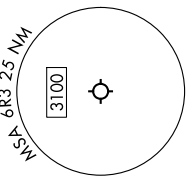
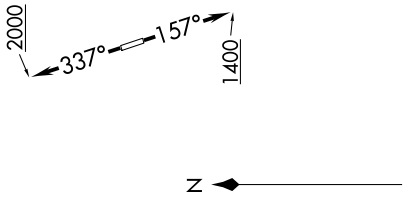
MMALT SEVEN DEPARTURE (RNAV)

SC-5, 20 MAR 2025 to 17 APR 2025

HOUSTON DEP CON
 119.7 281.4
 AWOS-3
 119.325
 CTAF
 123.0

RNAV 1 - DME/DME/IRU or GPS.
 RADAR required.

**TOP ALTITUDE:
 ASSIGNED BY ATC**



NOTE: GUSTI and LCH Transitions ATC assigned only for aircraft departing AXH, EFD, GLS, HPY, IWS, LBX, LVJ, SGR, TME, T00, T41 and 54T.

TAKEOFF MINIMUMS
 Rwy 16: Standard with minimum climb of 500'/NM to 660.
 Rwy 34: Standard with minimum climb of 500'/NM to 1000.

DEPARTURE ROUTE DESCRIPTION

TAKEOFF RUNWAY 16: Climb on heading 157° to 1400, for RADAR vectors to MMALT, thence...
 TAKEOFF RUNWAY 34: Climb on heading 337° to 2000, for RADAR vectors to MMALT, thence...
 ... on track 086° to MOOKI, then on (transition). Maintain ATC assigned altitude.
 Expect filed altitude 10 minutes after departure.

GUSTI TRANSITION (MMALT7.GUSTI)
LAKE CHARLES TRANSITION (MMALT7.LCH)
WHITE LAKE TRANSITION (MMALT7.LLA)

NOTE: Chart not to scale.

SC-5, 20 MAR 2025 to 17 APR 2025