

WAAS CH 77809 W16A	APP CRS 163°	Rwy Idg 4301 TDZE 1803 Apt Elev 1803
--	------------------------	---

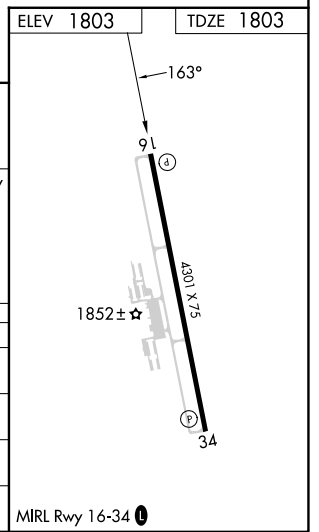
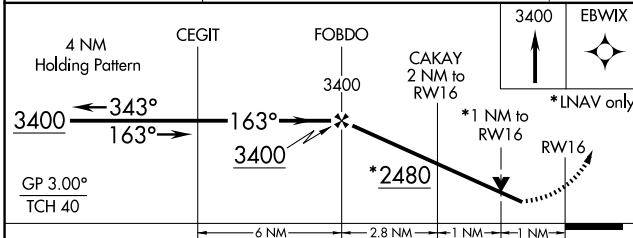
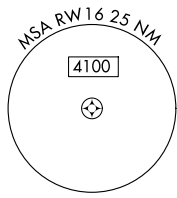
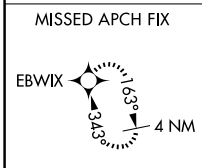
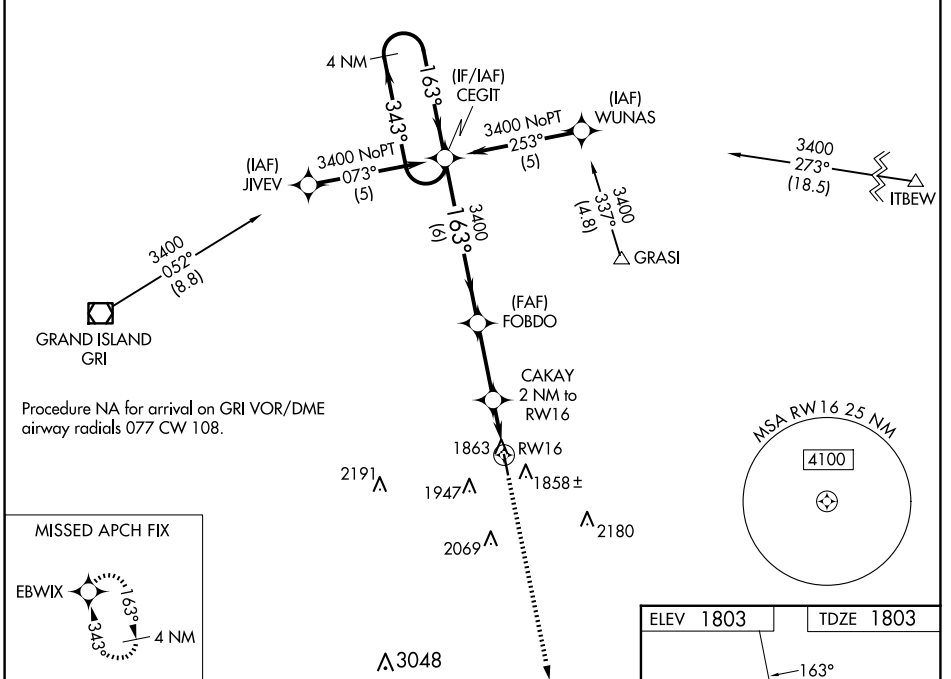
RNAV (GPS) RWY 16

AURORA MUNI/AL POTTER FLD (AUH)

⚠ Baro-VNAV NA when using Grand Island altimeter setting. For uncompensated Baro-VNAV systems, LNAV/VNAV NA below -18°C (0°F) or above 54°C (130°F). DME/DME RNP-0.3 NA. Visibility reduction by helicopters NA. When local altimeter setting not received, use Grand Island altimeter setting and increase all DA 41 feet and all MDA 60 feet and LPV all Cals visibility ¼ mile. VDP NA when using Grand Island altimeter setting.

MISSED APPROACH:
Climb to 3400 direct EBWIX and hold.

AWOS-3 121.225	MINNEAPOLIS CENTER 119.4 278.8	UNICOM 122.8 (CTAF) 0
--------------------------	--	---------------------------------



CATEGORY	A	B	C	D
LPV DA	2102-1	299 (300-1)		NA
LNAV/VNAV DA	2133-1¼	330 (400-1¼)		NA
LNAV MDA	2160-1	357 (400-1)		NA
C CIRCLING	2300-1 497 (500-1)	2340-1 537 (600-1)		NA

NC-2, 20 MAR 2025 to 17 APR 2025

NC-2, 20 MAR 2025 to 17 APR 2025