

WAAS CH 87009 W34A	APP CRS 343°	Rwy Idg TDZE Apt Elev	4301 1801 1803
--	------------------------	-----------------------------	---

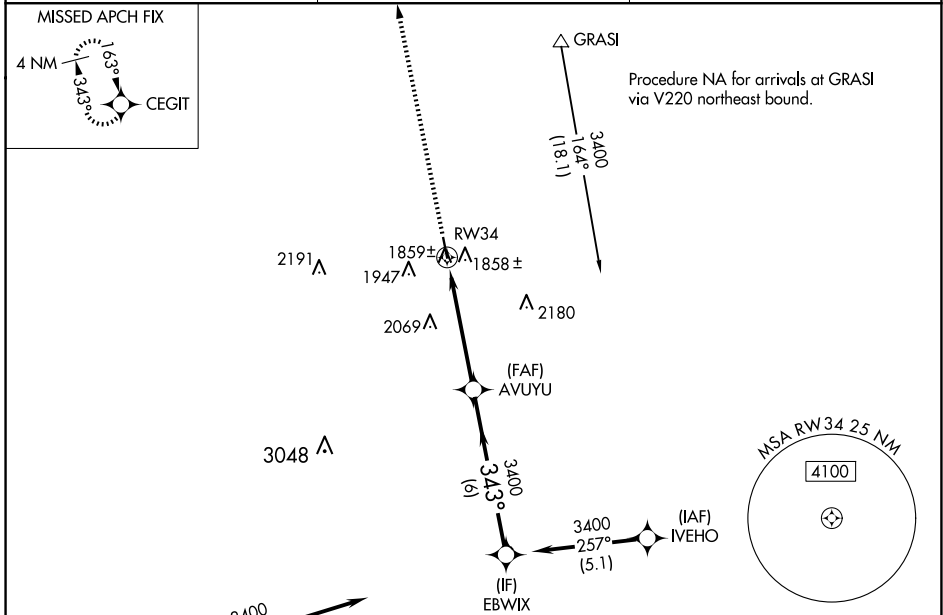
RNAV (GPS) RWY 34

AURORA MUNI/AL POTTER FLD (AUH)

⚠ Baro-VNAV NA when using Grand Island altimeter setting. For uncompensated Baro-VNAV systems, LNAV/VNAV NA below -18°C (0°F) or above 54°C (130°F). DME/DME RNP-0.3 NA. When local altimeter setting not received, use Grand Island altimeter setting and increase all DA 41 feet and all MDA 60 feet. VDP NA when using Grand Island altimeter setting.

MISSED APPROACH:
Climb to 3400 direct CEGIT and hold.

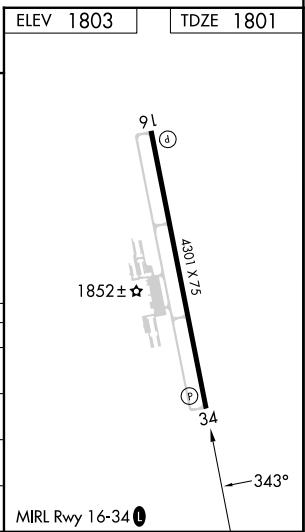
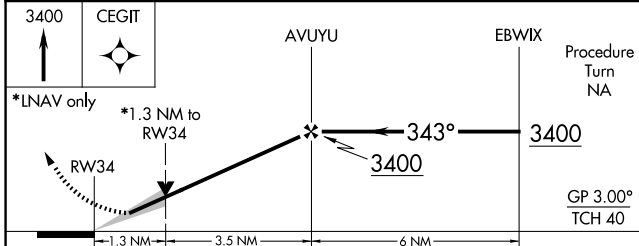
AWOS-3 121.225	MINNEAPOLIS CENTER 119.4 278.8	UNICOM 122.8 (CTAF) 0
--------------------------	--	---------------------------------



NC-2, 20 MAR 2025 to 17 APR 2025

NC-2, 20 MAR 2025 to 17 APR 2025

ELEV 1803	TDZE 1801
-----------	-----------



CATEGORY	A	B	C	D
LPV DA	2051-1	250 (300-1)		NA
LNAV/VNAV DA	2129-1¼	328 (400-1¼)		NA
LNAV MDA	2260-1	459 (500-1)		NA
C CIRCLING	2300-1 497 (500-1)	2340-1 537 (600-1)		NA

MIRL Rwy 16-34 0