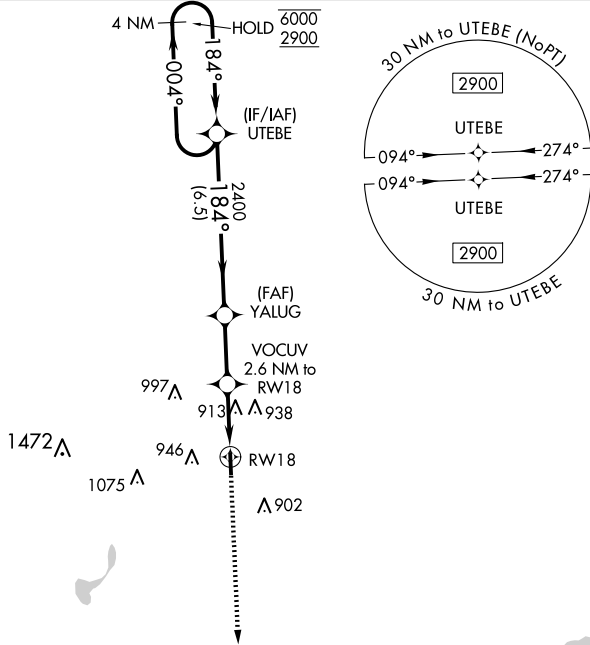


APP CRS	Rwy Idg	3534
184°	TDZE	739
	Apt Elev	739

RNAV (GPS) RWY 18

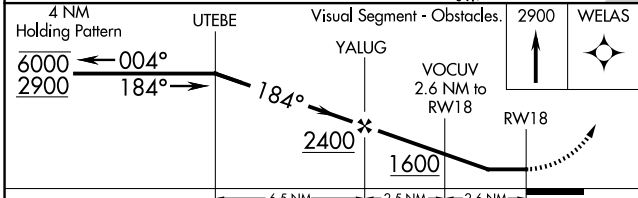
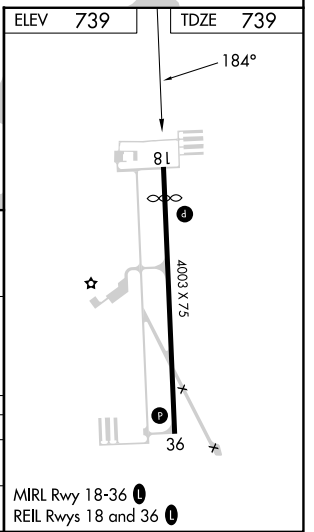
ROMEO STATE (D98)

RNP APCH - GPS.		MISSED APPROACH: Climb to 2900 direct WELAS and hold.
<p>▼ Rwy 18 helicopter visibility reduction below 1 SM NA. Use Coleman A Young Muni altimeter setting. Straight-in and Circling Rwy 18 NA at night.</p> <p>▲ NA</p>		
DET ASOS 124.875	SELFRIDGE APP CON★ 119.6 391.9	UNICOM 122.8 (CTAF) ①



EC-1, 20 MAR 2025 to 17 APR 2025

EC-1, 20 MAR 2025 to 17 APR 2025



CATEGORY	A	B	C	D
INAV MDA	1240-1	501 (600-1)	1240-1 $\frac{3}{8}$	501 (600-1 $\frac{3}{8}$)
CIRCLING	1300-1 561 (600-1)	1420-1 681 (700-1)	1420-2 681 (700-2)	1480-2 $\frac{1}{2}$ 741 (800-2 $\frac{1}{2}$)

MIRL Rwy 18-36 ①
REIL Rwys 18 and 36 ①