

|  |                        |                             |   |
|--|------------------------|-----------------------------|---|
| WAAS<br>CH <b>72923</b><br><b>W25A</b> | APP CRS<br><b>248°</b> | Rwy Idg<br>TDZE<br>Apt Elev | <b>5571</b><br><b>2800</b><br><b>2805</b> |
|--|------------------------|-----------------------------|---|

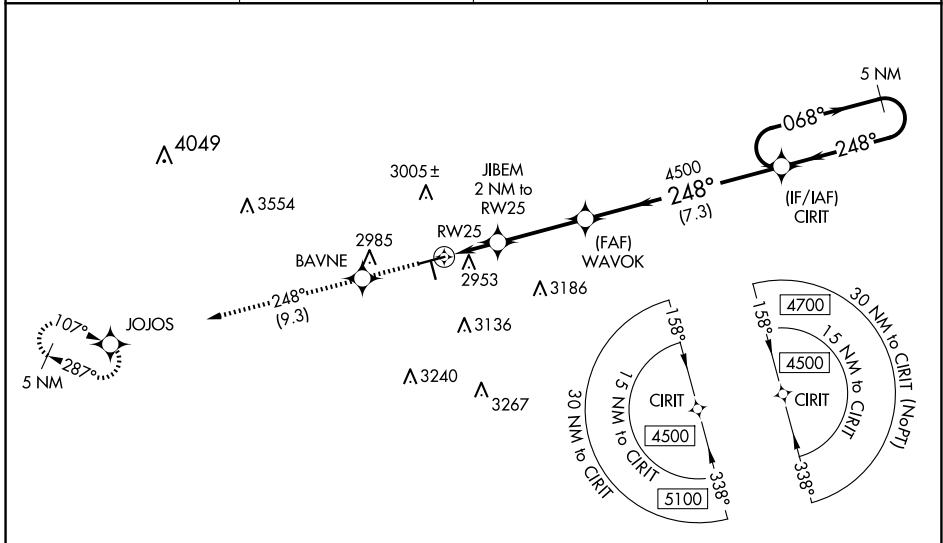
# RNAV (GPS) RWY 25

MIDLAND AIRPARK (MIDD)

**V** Baro-VNAV NA when using Midland Intl Air and Space Port altimeter setting.  
**A** For uncompensated Baro-VNAV systems, LNAV/VNAV NA below -20°C (-4°F) or above 26°C (78°F). When local altimeter setting not received, use Midland Intl Air and Space Port altimeter setting and increase LPV DA to 3109 and LNAV/VNAV DA to 3172 and all MDA 40 feet, increase LNAV/VNAV all Cats, LNAV Cats C/D and Circling Cat C visibility ¼ SM. When VGSI inop, Straight-in/Circling Rwy 25 procedure NA at night. DME/DME RNP-0.3 NA. Helicopter visibility reduction below 1 SM NA.

MISSED APPROACH: Climb to 5000 direct BAVNE and on 248° track to JOJOS and hold.

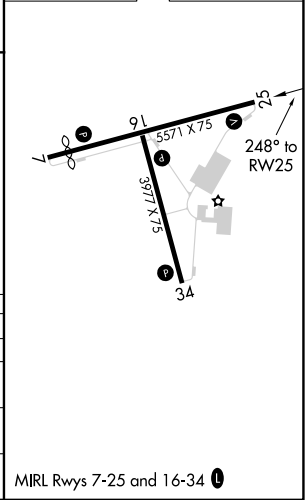
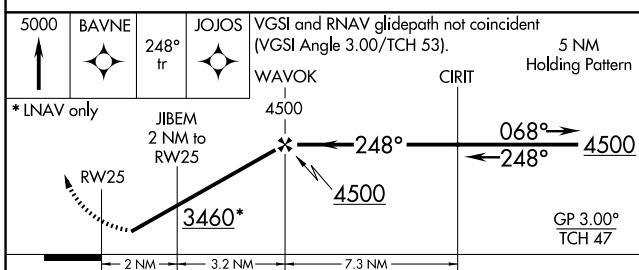
|                          |   |                          |                                 |
|--------------------------|---|--------------------------|---------------------------------|
| AWOS-3<br><b>118.125</b> | MIDLAND APP CON *<br><b>124.6 290.4</b> | CLNC DEL<br><b>121.8</b> | UNICOM<br><b>122.7 (CTAF) 0</b> |
|--------------------------|---|--------------------------|---------------------------------|



SC-3, 20 MAR 2025 to 17 APR 2025

SC-3, 20 MAR 2025 to 17 APR 2025

|           |                    |
|-----------|--------------------|
| ELEV 2805 | <b>D</b> TDZE 2800 |
|-----------|--------------------|



| CATEGORY     | A                          | B           | C             | D               |
|--------------|----------------------------|-------------|---------------|-----------------|
| LPV DA       | 3081-1 281 (300-1)         |             |               |                 |
| LNAV/VNAV DA | 3144-1 1/8 344 (400-1 1/8) |             |               |                 |
| LNAV MDA     | 3220-1                     | 420 (500-1) | 3220-1 1/4    | 420 (500-1 1/4) |
| CIRCLING     | 3320-1                     | 515 (600-1) | 3440-1 3/4    | 3700-3          |
|              |                            |             | 635 (700-3/4) | 895 (900-3)     |

MIRR Rwy 7-25 and 16-34 0