

APP CRS	Rwy Idg	4000
052°	TDZE	990
	Apt Elev	995

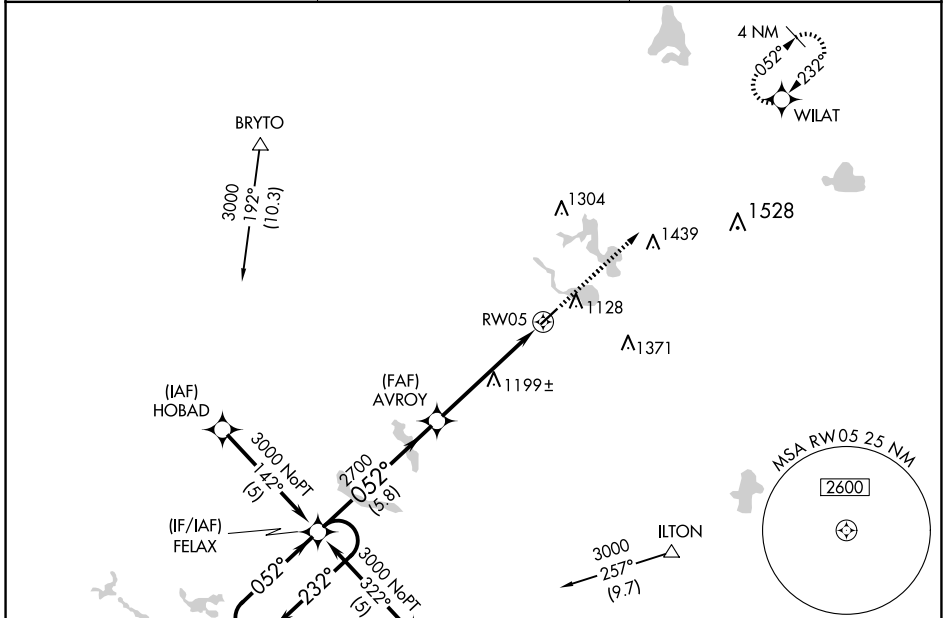
RNAV (GPS) RWY 5

TRI-STATE STEUBEN COUNTY (ANQ)

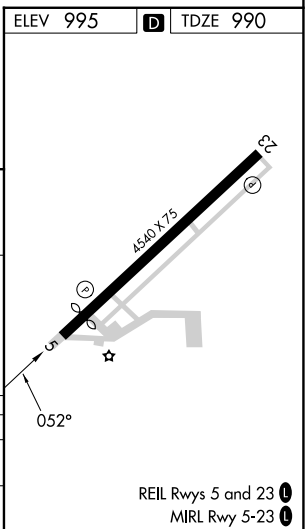
RNP APCH.
 ▼ For uncompensated Baro-VNAV systems, LNAV/VNAV NA below -16°C or above 54°C.
 ▲ NA Rwy 5 helicopter visibility reduction below ¾ SM NA.

MISSED APPROACH:
 Climb to 3000 direct
 WILAT and hold.

AWOS-3 118.175	FORT WAYNE APP CON 127.2 284.6 (SW/NW) 132.15 284.6 (SE/NE)	UNICOM 123.075 (CTAF) 1
--------------------------	---	--



ELEV 995		TDZE 990	
4 NM Holding Pattern		3000 WILAT	
3000 ← 232°		→ 052°	
GP 3.00°		TCH 40	
5.8 NM		3.8 NM	
A		B	
C		D	
LNNAV/VNAV	DA	NA	
LNNAV MDA	DA	NA	



REIL Rwy 5 and 23 **1**
 MIRL Rwy 5-23 **1**

EC-2, 20 MAR 2025 to 17 APR 2025

EC-2, 20 MAR 2025 to 17 APR 2025