

ULYSSES, KANSAS

AL-6226 (FAA)

23334

WAAS CH 99539 W12A	APP CRS 124°	Rwy ldg TDZE Apt Elev	4600 3071 3071
--	------------------------	-----------------------------	---

RNAV (GPS) RWY 12

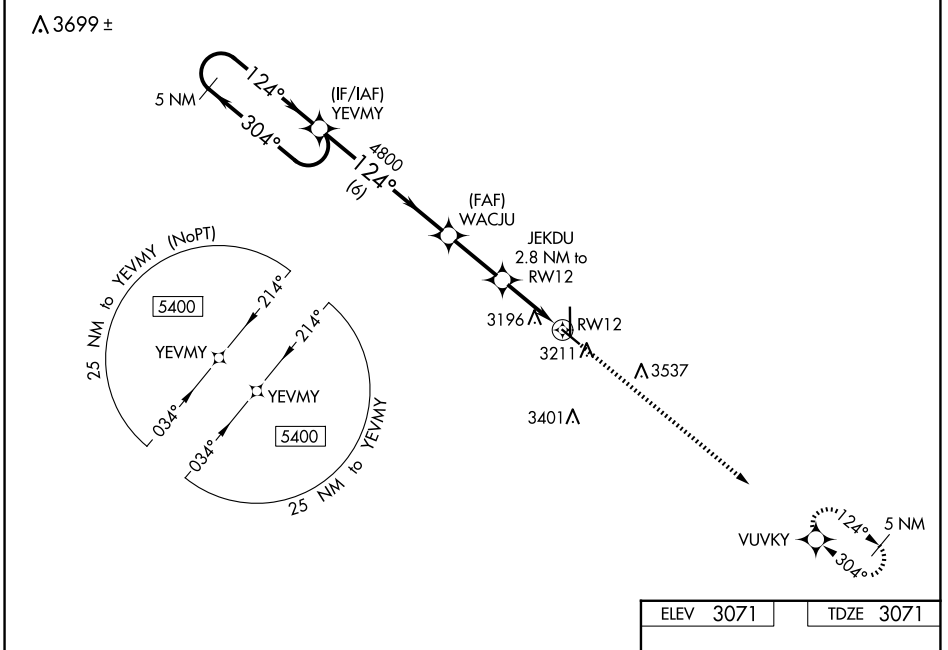
ULYSSES (ULS)

RNP APCH - GPS.

⚠ For uncompensated Baro-VNAV systems, LNAV/VNAV NA below -21°C or above 54°C.
⚠ When local altimeter setting not received, use Garden City altimeter setting: increase LPV DA to 3431 feet, LNAV/VNAV DA to 3563 feet and visibility 1/8 SM; increase all MDAs 120 Feet and visibility Cat C 1/4 SM. Baro-VNAV and VDP NA when using Garden City altimeter setting.

MISSED APPROACH:
Climb to 5400 direct VUVKY and hold.

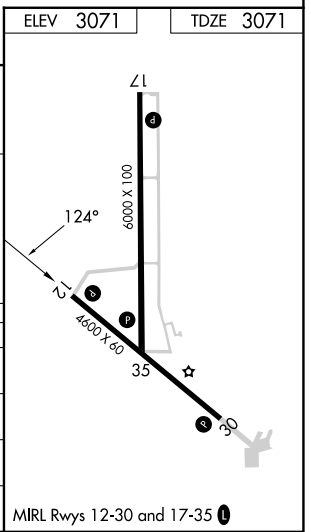
AWOS-3PT 118.95	KANSAS CITY CENTER 125.2 285.425	UNICOM 122.8 (CTAF) 0
---------------------------	--	---------------------------------



NC-2, 20 MAR 2025 to 17 APR 2025

NC-2, 20 MAR 2025 to 17 APR 2025

5400 ← 304°		YEVMY		WACJU		JEKDU		RWY 12		5400		VUVKY	
GP 3.00°				4800		4000							
TCH 40													
		6 NM		2.5 NM		1.7 NM		1.1 NM					
CATEGORY		A	B	C	D								
LPV	DA	3321-1 250 (300-1)				NA							
LNAV/VNAV	DA	3453-1 1/4 382 (400-1 1/4)				NA							
LNAV	MDA	3460-1 389 (400-1)		3460-1 1/8 389 (400-1 1/8)		NA							
C	CIRCLING	3740-1 669 (700-1)		3900-2 1/2 829 (900-2 1/2)		NA							



ULYSSES, KANSAS
Amdt 2A 06OCT22

37°36'N-101°22'W

ULYSSES (ULS) RNAV (GPS) RWY 12