

WAAS CH 82133 W13A	APP CRS 127°	Rwy Idg 5003 TDZE 598 Apt Elev 598
----------------------------------------	------------------------	---------------------------------------------------------------

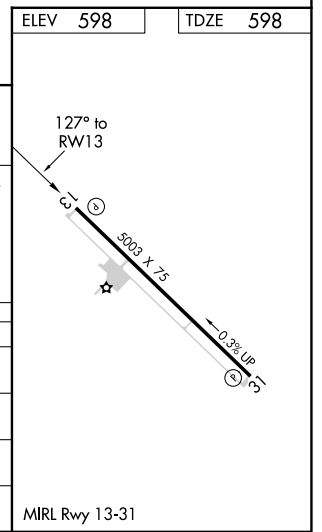
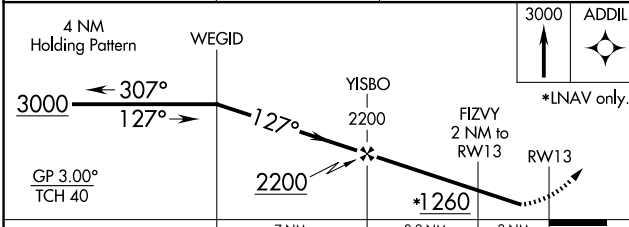
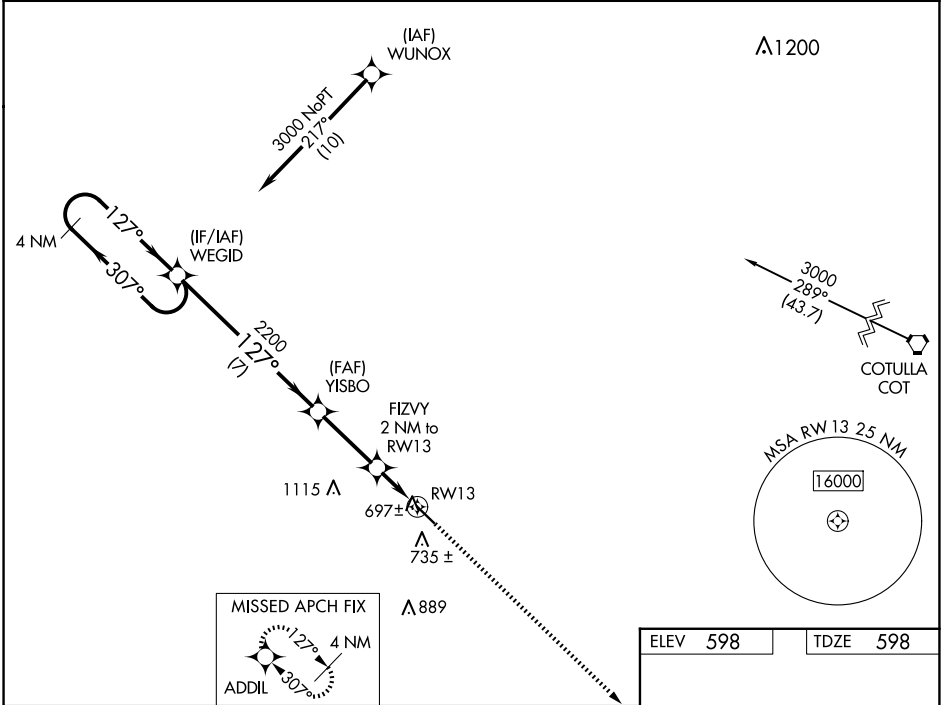
RNAV (GPS) RWY 13

DIMITT COUNTY (CZT)

Baro-VNAV NA. DME/DME RNP-0.3 NA. Use Cotulla altimeter setting; when not received use Uvalde altimeter setting and increase all DA 52 feet, all MDA 60 feet and increase LPV all Cats, LNAV/VNAV all Cats, and Circling Cat C visibility 1/4 mile. Helicopter visibility reduction below 3/4 SM NA.

MISSED APPROACH: Climb to 3000 direct ADDIL and hold.

AWOS-3 119.625	COT ASOS 118.325	HOUSTON CENTER 127.8 307.2	UNICOM 122.8 (CTAF)
--------------------------	----------------------------	--------------------------------------	-------------------------------



CATEGORY	A	B	C	D
LPV DA	940-1 1/8	342 (400-1 1/8)		NA
LNAV/VNAV DA	940-1 1/8	342 (400-1 1/8)		NA
LNAV MDA	1040-1	442 (500-1)	1040-1 1/8 442 (500-1 3/8)	NA
C CIRCLING	1160-1 562 (600-1)	1240-1 642 (700-1)	1500-2 3/4 902 (1000-2 3/4)	NA

SC-3, 20 MAR 2025 to 17 APR 2025

SC-3, 20 MAR 2025 to 17 APR 2025