

WAAS CH 70603 W33A	APP CRS 328°	Rwy Idg TDZE Apt Elev	4000 367 367
---------------------------------	------------------------	-----------------------------	---

RNAV (GPS) RWY 33

COULTER FLD (CFD)

RNP APCH.
 ⚠️ NA Baro-VNAV NA. Use College Station altimeter setting; when not received, use Caldwell altimeter setting and increase all DA 31 feet and all MDA 40 feet.

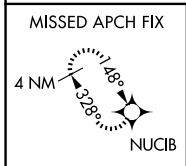
MISSED APPROACH: Climb to 2500 direct NUCIB and hold.

AWOS-3PT
125.975

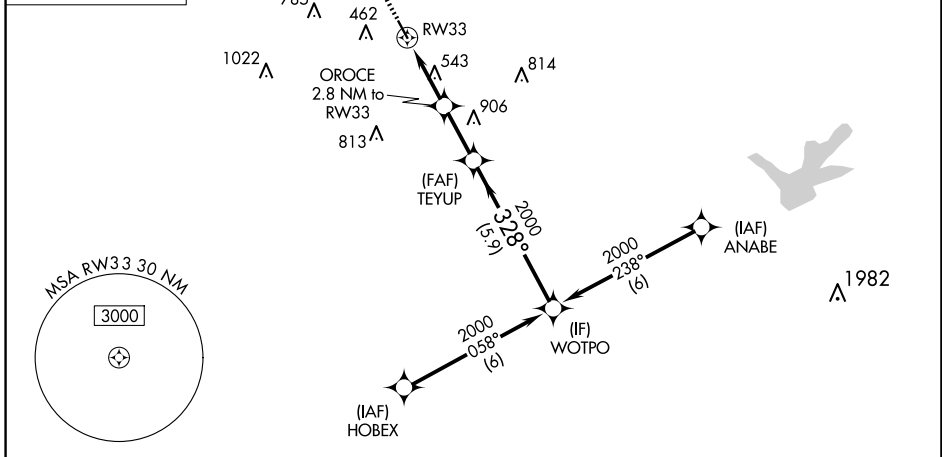
CLL ASOS
126.85

HOUSTON APP CON
134.3 360.85

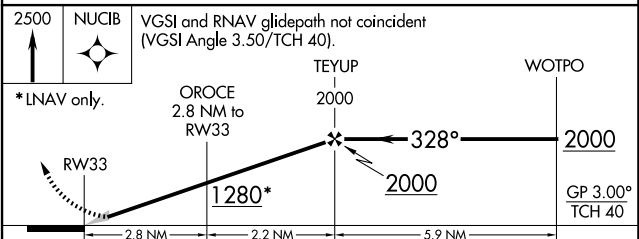
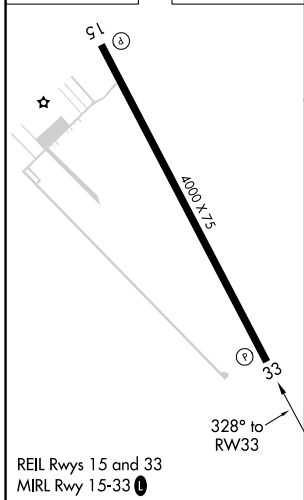
UNICOM
123.0 (CTAF) 📻



RADAR REQUIRED



ELEV	367	TDZE	367
------	-----	------	-----



CATEGORY	A	B	C	D
LPV DA	642-1	275 (300-1)	NA	
LNNAV/VNAV DA	642-1	275 (300-1)	NA	
LNNAV MDA	880-1	513 (600-1)	NA	

SC-5, 20 MAR 2025 to 17 APR 2025

SC-5, 20 MAR 2025 to 17 APR 2025