

VORTAC FBC 108.2 Chan 19	APP CRS 298°	Rwy Idg TDZE Apt Elev	4502 763 763
--	------------------------	-----------------------------	---

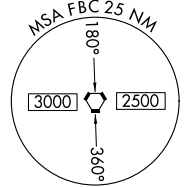
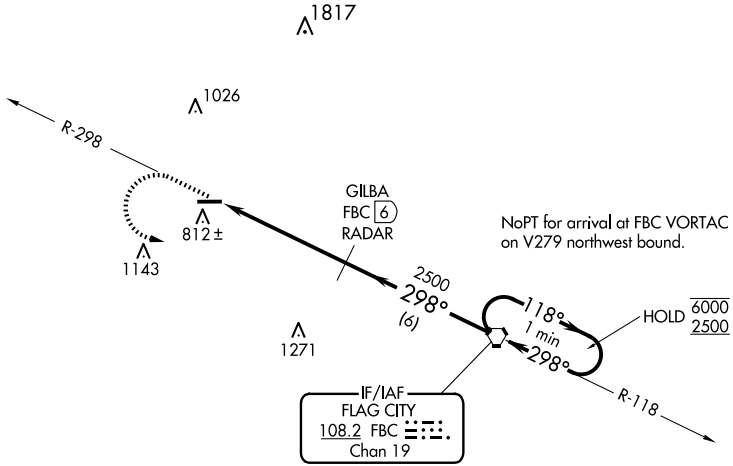
VOR RWY 27

PUTNAM COUNTY (OWX)

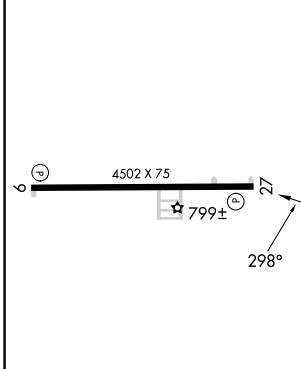
RADAR or DME required.
 ▼ Rwy 27 helicopter visibility reduction below 1 SM NA.
 ▲ NA Straight-in, Circling Rwy 27 NA at night.

MISSED APPROACH: Climb to 2500 on FBC VORTAC R-298 then left turn direct FBC VORTAC and hold.

AWOS-3 120.525	TOLEDO APP CON 120.8 317.55	UNICOM 122.7 (CTAF) 0
--------------------------	---------------------------------------	---------------------------------

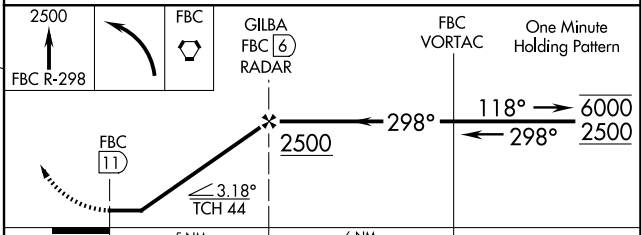


ELEV 763	TDZE 763
----------	----------



REIL Rws 9 and 27
 MRL Rwy 9-27

FAF to MAP 5 NM					
Knots	60	90	120	150	180
Min:Sec	5:00	3:20	2:30	2:00	1:40



CATEGORY	A	B	C	D
S-27	1220-1	457 (500-1)	NA	
CIRCLING	1220-1	457 (500-1)	NA	

EC-2, 20 MAR 2025 to 17 APR 2025

EC-2, 20 MAR 2025 to 17 APR 2025