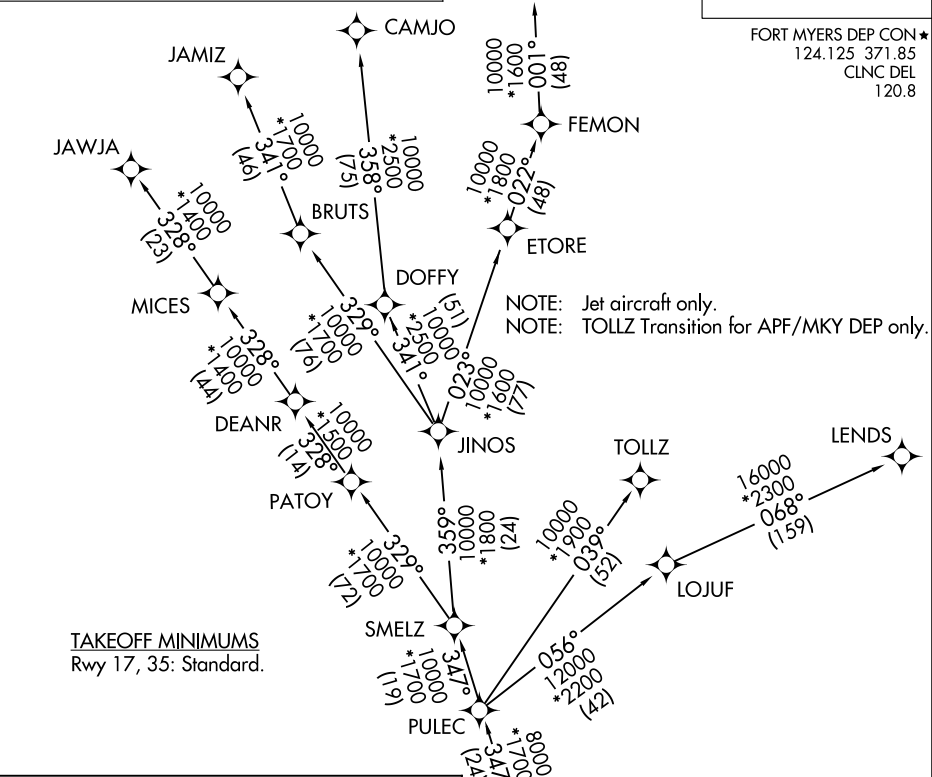


CSHEL SEVEN DEPARTURE (RNAV)

RNAV 1 - DME/DME/IRU or GPS.
RADAR required for non-GPS equipped aircraft.

**TOP ALTITUDE:
2000**

FORT MYERS DEP CON*
124.125 371.85
CLNC DEL
120.8



SE-3, 20 MAR 2025 to 17 APR 2025

SE-3, 20 MAR 2025 to 17 APR 2025

TAKEOFF MINIMUMS
Rwy 17, 35: Standard.

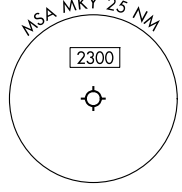
DEPARTURE ROUTE DESCRIPTION

TAKEOFF RUNWAY 17: Climb on assigned heading for RADAR vectors to CSHEL, thence...

TAKEOFF RUNWAY 35: Climb on heading 005° to 700, for RADAR vectors to CSHEL, thence. . . .

. . . on assigned transition. Maintain 2000. Expect clearance to filed altitude within 10 minutes after departure.

CAMJO TRANSITION (CSHEL7.CAMJO)
JAMIZ TRANSITION (CSHEL7.JAMIZ)
JAWJA TRANSITION (CSHEL7.JAWJA)
LENDZ TRANSITION (CSHEL7.LENDZ)
TOLLZ TRANSITION (CSHEL7.TOLLZ)
VIYAP TRANSITION (CSHEL7.VIYAP)



NOTE: Chart not to scale.

CSHEL SEVEN DEPARTURE (RNAV)

(CSHEL7.CSHEL) 31OCT24