

WAAS CH <b>56248</b> <b>W17A</b>	APP CRS <b>173°</b>	Rwy Idg TDZE <b>889</b> Apt Elev <b>892</b>	<b>5799</b>
--	------------------------	---	-------------

# RNAV (GPS) RWY 17

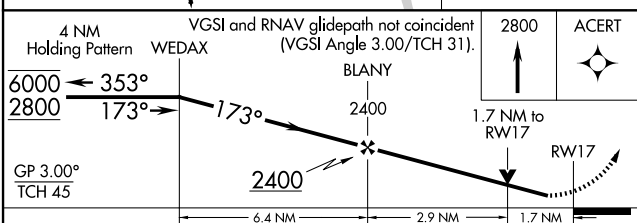
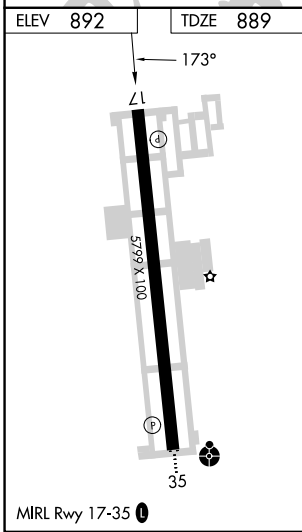
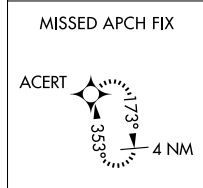
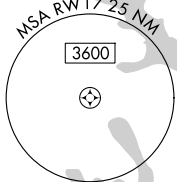
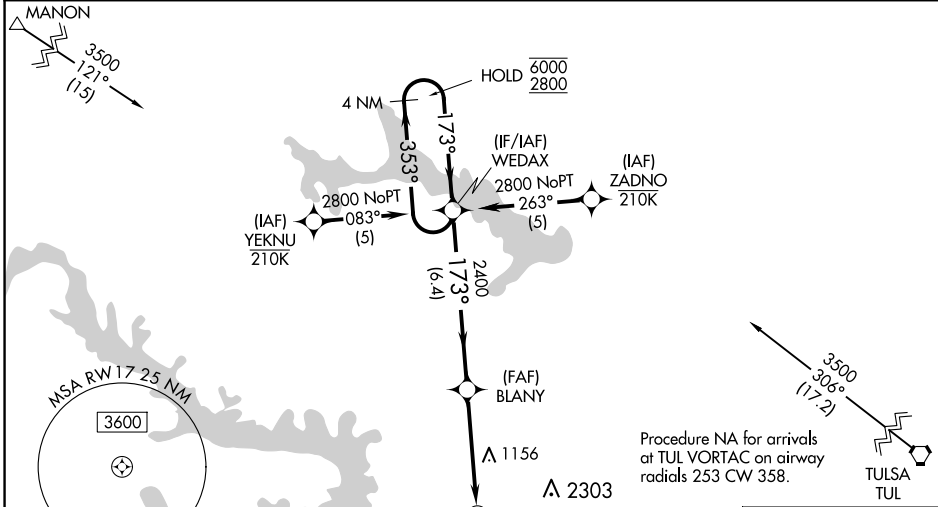
WILLIAM R POGUE MUNI (OWP)

RNP APCH - GPS.

**⚠** Rwy 17 helicopter visibility reduction below 3/4 SM NA. For uncompensated Baro-VNAV systems, LNAV/VNAV NA below -16°C or above 54°C. Circling NA for Cat C east of Rwy 17-35.  
**⚠** When local altimeter setting not received, use TUL altimeter setting and increase LPV DA to 1206 feet and all visibilities 1/2 SM; increase LNAV/VNAV DA to 1443 feet and all visibilities 1/4 SM; increase all MDAs 80 feet and LNAV visibility Cat C 1/2 SM, and Circling visibility Cat C 1/2 SM. Baro-VNAV and VDP NA when using TUL altimeter setting.

**MISSED APPROACH:**  
Climb to 2800 direct ACERT and hold.

AWOS-3T <b>118.325</b>	TULSA APP CON <b>124.0 338.3</b>	UNICOM <b>122.7 (CTAF)</b>
---------------------------	-------------------------------------	-------------------------------



CATEGORY	A	B	C	D
LPV DA	1139-3/4		250 (300-3/4)	NA
LNAV/VNAV DA	1376-1 3/8		487 (500-1 1/8)	NA
LNAV MDA	1460-1	571 (600-1)	1460-1 5/8 571 (600-1 5/8)	NA
CIRCLING	1460-1	568 (600-1)	1460-1 5/8 568 (600-1 5/8)	NA

SC-1, 20 MAR 2025 to 17 APR 2025

SC-1, 20 MAR 2025 to 17 APR 2025