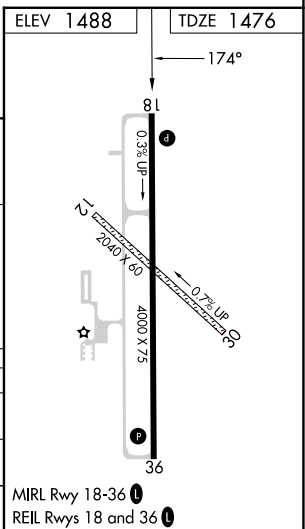
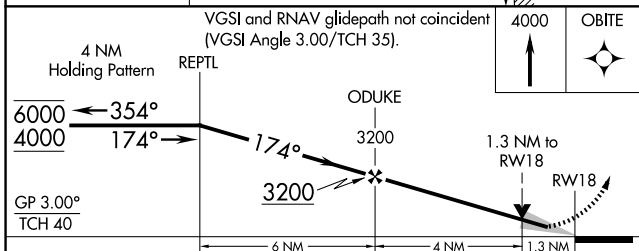
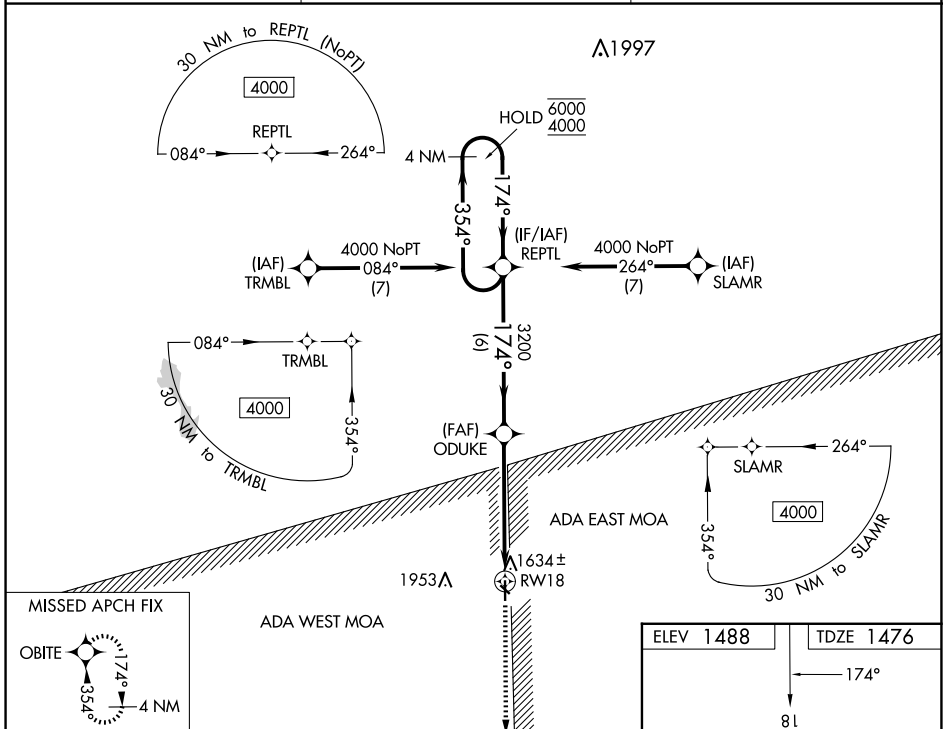


| | | |
|--|------------------------|---|
| WAAS CH 69244 W18A | APP CRS 174° | Rwy Idg 4000 TDZE 1476 Apt Elev 1488 |
|--|------------------------|---|

RNAV (GPS) RWY 18

BLOSSER MUNI (CNK)

| | | |
|---|--|---|
| RNP APCH-GPS. | | MISSED APPROACH: Climb to 4000 direct OBITE and hold. |
| <p>⚠ Rwy 18 helicopter visibility reduction below 1 SM NA. For uncompensated Baro-VNAV systems, LNAV/VNAV NA below -20°C or above 54°C. Baro-VNAV and VDP NA when using Hebron Muni altimeter setting.</p> | | |
| ASOS 123.825 | KANSAS CITY CENTER 134.9 363.2 | UNICOM 122.8 (CTAF) 0 |



| CATEGORY | A | B | C | D |
|--------------|--------|-------------|---|----|
| LPV DA | 1738-1 | 262 (300-1) | | NA |
| LNAV/VNAV DA | 1776-1 | 300 (300-1) | | NA |
| LNAV MDA | 1920-1 | 444 (500-1) | | NA |

NC-2, 20 MAR 2025 to 17 APR 2025

NC-2, 20 MAR 2025 to 17 APR 2025