

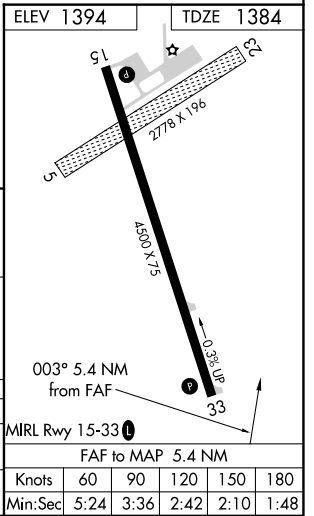
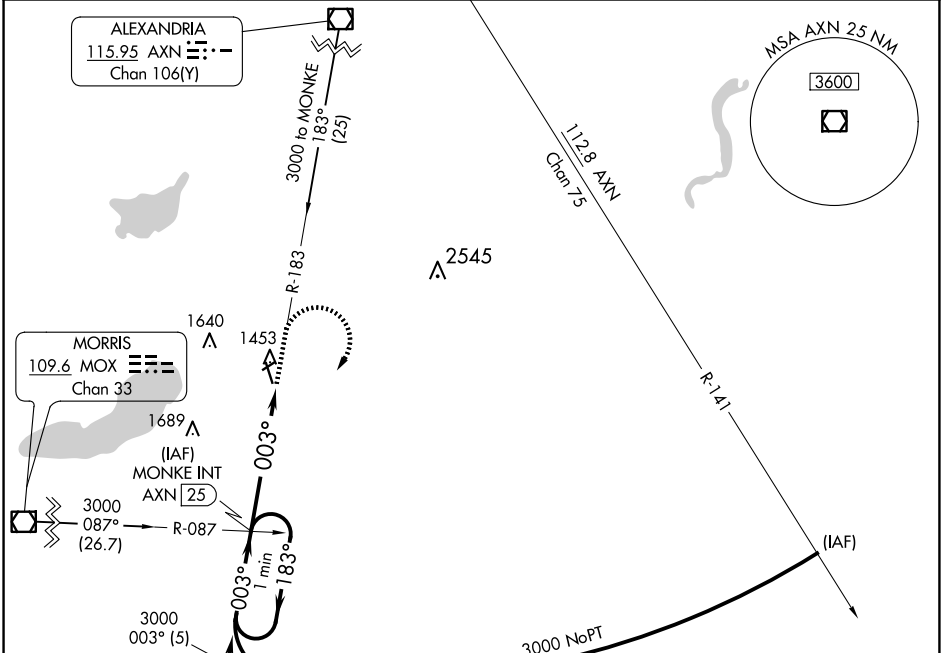
VOR/DME AXN <b>115.95</b> Chan <b>106(Y)</b>	APP CRS <b>003°</b>	Rwy Idg <b>4500</b> TDZE <b>1384</b> Apt Elev <b>1394</b>
--	------------------------	---

**VOR RWY 33**  
GLENWOOD MUNI (GHW)

**⚠** Circling to Rwy 5/23 NA. When local altimeter setting not received, use Alexandria altimeter setting and increase all MDA 40 feet and S-33 Cat C visibility ¼ mile. Rwy 33 helicopter visibility reduction below ¾ SM NA.

MISSED APPROACH: Climb to 2000, then climbing right turn to 3000 via AXN R-183 to MONKE INT/25 DME and hold.

AWOS-3 <b>118.925</b>	MINNEAPOLIS CENTER <b>126.1 269.2</b>	GCO <b>121.725</b>	CTAF <b>122.90</b>
--------------------------	--	-----------------------	-----------------------



One Minute Holding Pattern	MONKE INT AXN 25	2000	3000	MONKE INT
3000	← 183°	003°	→	003°
5.4 NM				

CATEGORY	A	B	C	D
S-33	1880-1	496 (500-1)	1880-1¼ 496 (500-1¼)	NA
CIRCLING	1880-1	486 (500-1)	1940-1½ 546 (600-1½)	NA

MIRL Rwy 15-33	FAF to MAP 5.4 NM				
Knots	60	90	120	150	180
Min:Sec	5:24	3:36	2:42	2:10	1:48

NC-1, 20 MAR 2025 to 17 APR 2025

NC-1, 20 MAR 2025 to 17 APR 2025