

APP CRS	Rwy Idg	<b>7000</b>
<b>270°</b>	TDZE	<b>607</b>
	Apt Elev	<b>607</b>

# RNAV (GPS) RWY 27

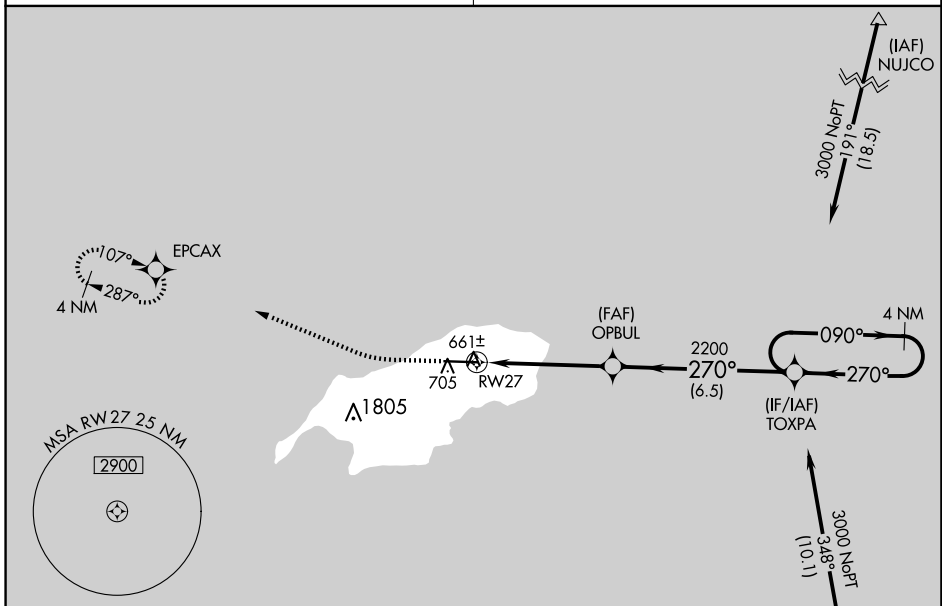
BENJAMIN TAISACAN MANGLONA INTL (GRO)(PGRO)

**V** Circling NA south of Rwy 9-27. When local altimeter setting not received, use Andersen AFB altimeter setting and increase all MDA 320 feet, increase LNAV Cat B visibility ¼ mile, Cat C visibility 1½ mile, Cat D visibility 1 mile, Circling Cat C visibility 1 mile Cat D visibility ¾ mile. DME/DME RNP -0.3 NA.

**MISSED APPROACH:** Climb to 1200 then climbing right turn to 3000 direct EPCAX and hold.

GUAM CERAP  
**120.5 263.0**

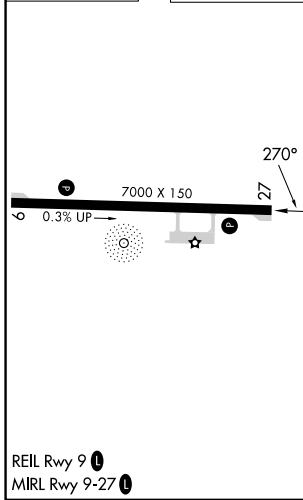
CTAF  
**123.6**



PAC, 20 FEB 2025 to 17 APR 2025

PAC, 20 FEB 2025 to 17 APR 2025

ELEV	<b>607</b>	<b>D</b>	TDZE	<b>607</b>
------	------------	----------	------	------------



	1200	3000	EPCAX	
	↑	↷	✧	
	RWY 27			TOXPA 4 NM Holding Pattern
	OPBUL		3000	
	RWY 27		090° →	
	2200		← 270°	
	4.9 NM		6.5 NM	
CATEGORY	A	B	C	D
LNAV MDA	1020-1 413 (500-1)	1040-1 433 (500-1)	1100-1½ 493 (500-1½)	1140-1½ 533 (600-1½)
<b>C</b> CIRCLING	1020-1 413 (500-1)	1060-1 453 (500-1)	1100-1½ 493 (500-1½)	1160-2 553 (600-2)

REIL Rwy 9 **1**  
MIRL Rwy 9-27 **1**

ROTA ISLAND, CQ  
Amdt 1A 02MAR17

BENJAMIN TAISACAN MANGLONA INTL (GRO)(PGRO)  
**RNAV (GPS) RWY 27**

14°10'N-145°14'E