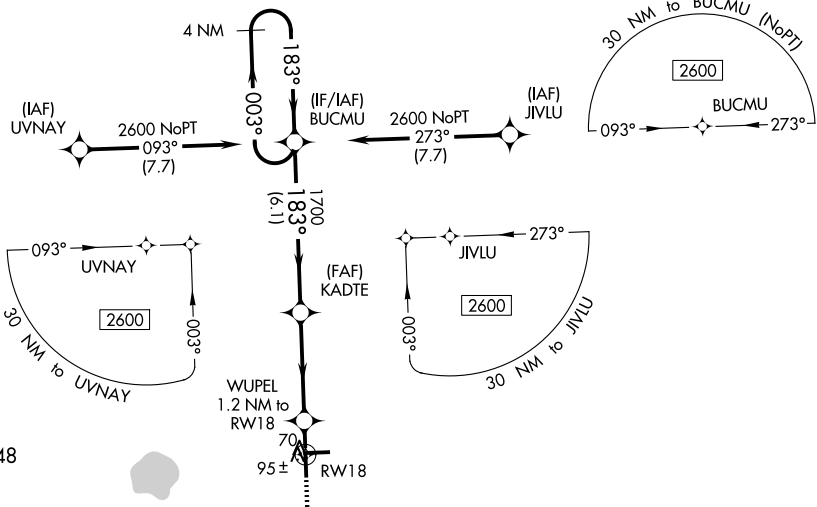


WAAS CH <b>63213</b> <b>W18A</b>	APP CRS <b>183°</b>	Rwy ldg TDZE <b>36</b> Apt Elev <b>37</b>	<b>4550</b>
--	------------------------	---	-------------

# RNAV (GPS) RWY 18

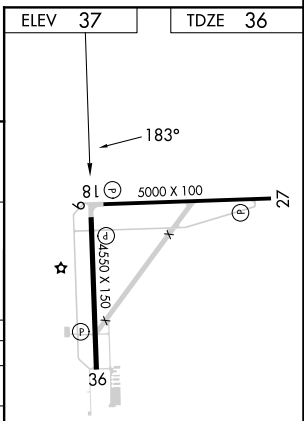
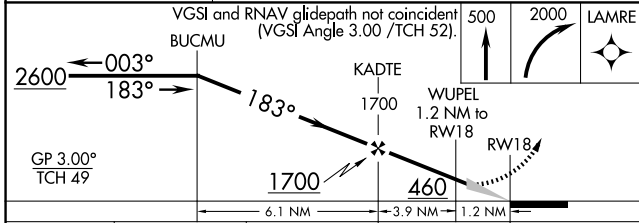
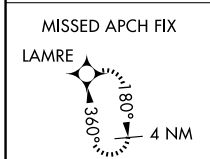
IMMOKALEE RGNL (IMIM)

RNP APCH - GPS.		<p>MISSED APPROACH: Climb to 500 then climbing right turn to 2000 direct LAMRE and hold.</p>
<p>For uncompensated Baro-VNAV systems, LNAV/VNAV NA below 0°C or above 54°C.</p>		
AWOS-3 <b>118.525</b>	FORT MYERS APP CON ★ <b>124.125 371.85</b>	CTAF <b>122.9</b>



SE-3, 20 MAR 2025 to 17 APR 2025

SE-3, 20 MAR 2025 to 17 APR 2025



CATEGORY	A	B	C	D
LPV DA		286-1	250 (300-1)	
LNAV/VNAV DA		286-1	250 (300-1)	
LNAV MDA		360-1	324 (400-1)	
CIRCLING	500-1 463 (500-1)	640-1 603 (700-1)	640-1 ¼ 603 (700-1¼)	680-2 643 (700-2)

REIL Rwy 9, 18, 27, and 36  
MIRL Rwy 9-27 and 18-36