

WAAS CH <b>70504</b> <b>W36A</b>	APP CRS <b>356°</b>	Rwy Idg TDZE Apt Elev	<b>5201</b> <b>1277</b> <b>1277</b>
--	------------------------	-----------------------------	---

# RNAV (GPS) RWY 36

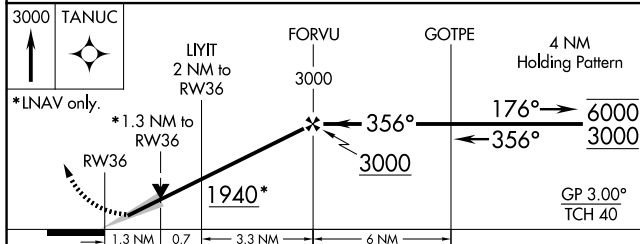
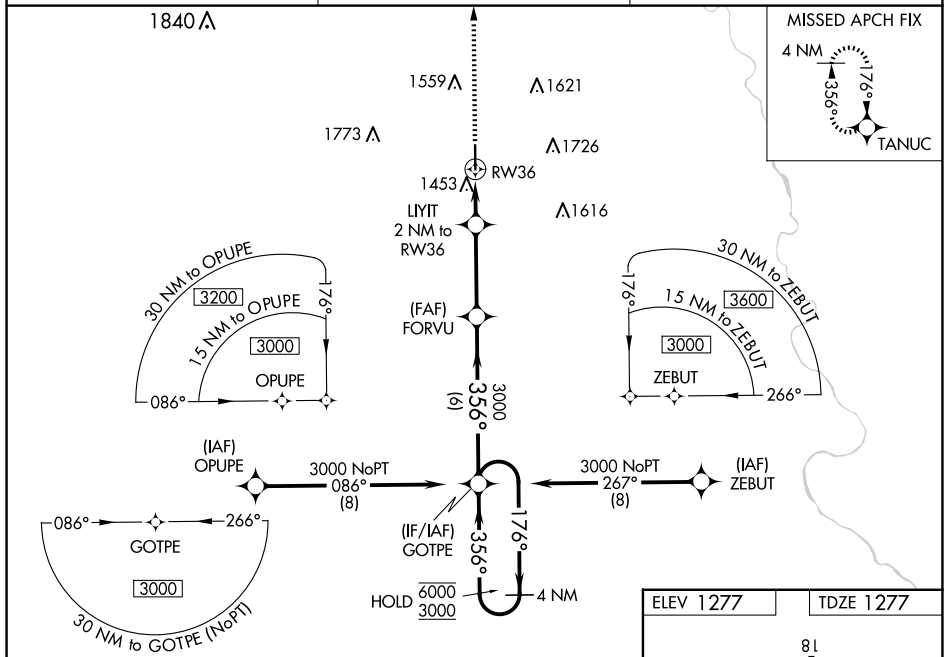
WELLINGTON MUNI (E/GT)

RNP APCH.

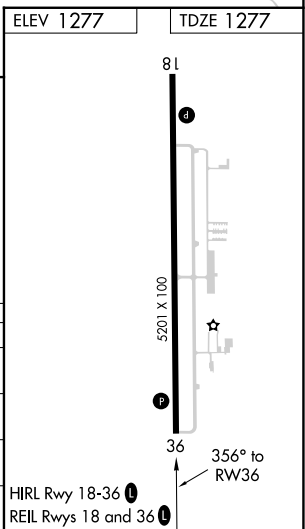
**NA** Baro-VNAV and VDP NA when using Wichita Dwight D Eisenhower Ntl altimeter setting. For uncompensated Baro-VNAV systems, LNAV/VNAV NA below -17°C or above 54°C. When local altimeter setting not received, use Wichita Dwight D Eisenhower Ntl altimeter setting: increase LPV DA to 1581 feet; increase LNAV/VNAV DA to 1668 feet and all visibilities  $\frac{1}{8}$  SM; increase all MDA 60 feet and Circling Cat C/D visibility  $\frac{1}{4}$  SM.

MISSED APPROACH: Climb to 3000 direct TANUC and hold.

AWOS-3P <b>118.875</b>	WICHITA APP CON <b>134.85</b>	UNICOM <b>122.8</b> (CTAF)
---------------------------	----------------------------------	-------------------------------



CATEGORY	A	B	C	D
LPV DA		1527-1	250 (300-1)	
LNAV/VNAV DA		1614-1	337 (400-1)	
LNAV MDA	1720-1	443 (500-1)	1720-1 $\frac{3}{8}$	443 (500-1 $\frac{3}{8}$ )
CIRCLING	1760-1	483 (500-1)	2040-2 $\frac{1}{4}$ 763 (800-2 $\frac{1}{4}$ )	2140-2 $\frac{3}{4}$ 863 (900-2 $\frac{3}{4}$ )



NC-2, 20 MAR 2025 to 17 APR 2025

NC-2, 20 MAR 2025 to 17 APR 2025