

MESA, ARIZONA

AL-6647 (FAA)

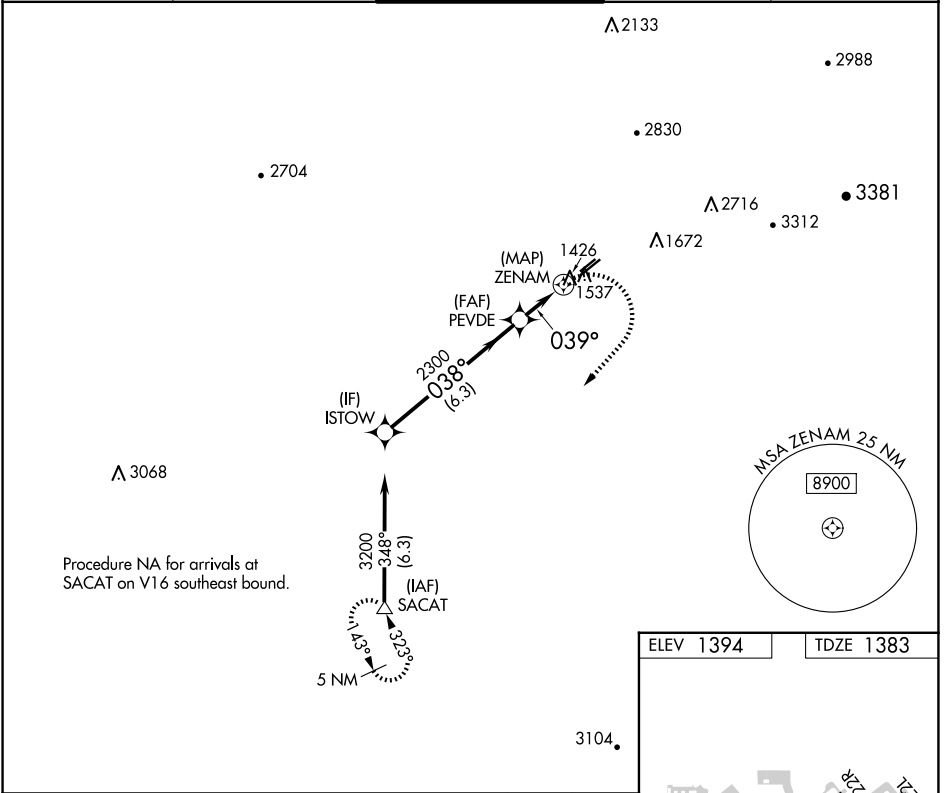
24137

WAAS CH 56625 W04A	APP CRS 039°	Rwy Idg TDZE Apt Elev	3799 1383 1394
----------------------------------------	------------------------	-----------------------------	-------------------------------------------

RNAV (GPS) RWY 4L

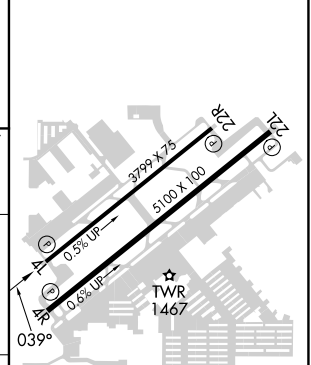
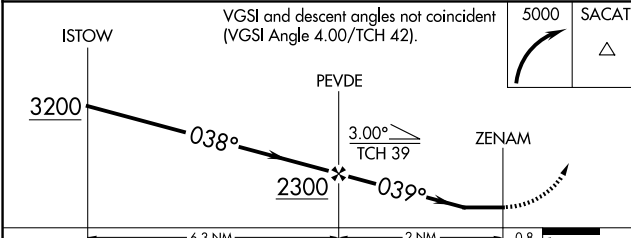
FALCON FLD (F'F'Z)

RNP APCH.		MISSED APPROACH: Climbing right turn to 5000 direct SACAT and hold, continue climb-in-hold to 5000.		
Rwy 4L helicopter visibility reduction below 1 SM NA.				
ATIS 118.25	PHOENIX APP CON 120.7 239.0	FALCON TOWER * 124.6 (CTAF) 0	GND CON 121.3	UNICOM 122.95



Procedure NA for arrivals at SACAT on V16 southeast bound.

ELEV 1394	TDZE 1383
-----------	-----------



CATEGORY	A	B	C	D
LP MDA	1780-1	397 (400-1)	1780-1½ 397 (400-1½)	NA
LNAV MDA	1800-1	417 (500-1)	1800-1½ 417 (500-1½)	NA

REIL Rwy 4L, 4R, 22L and 22R
MIRL Rwy 4L-22R and 4R-22L

SW-4, 20 MAR 2025 to 17 APR 2025

SW-4, 20 MAR 2025 to 17 APR 2025

MESA, ARIZONA
Amdt 1D 12AUG21

33°28'N-111°44'W

RNAV (GPS) RWY 4L

FALCON FLD (F'F'Z)