

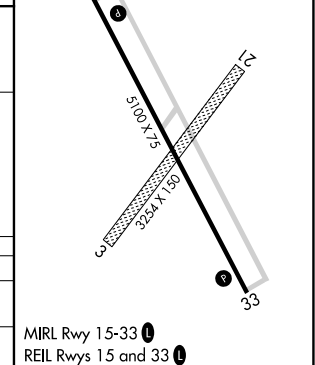
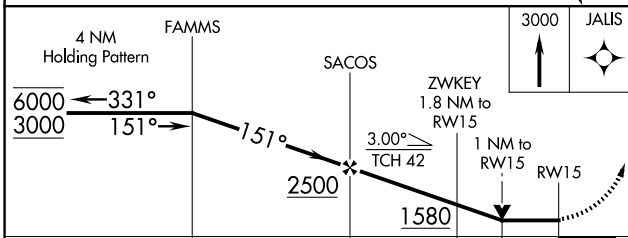
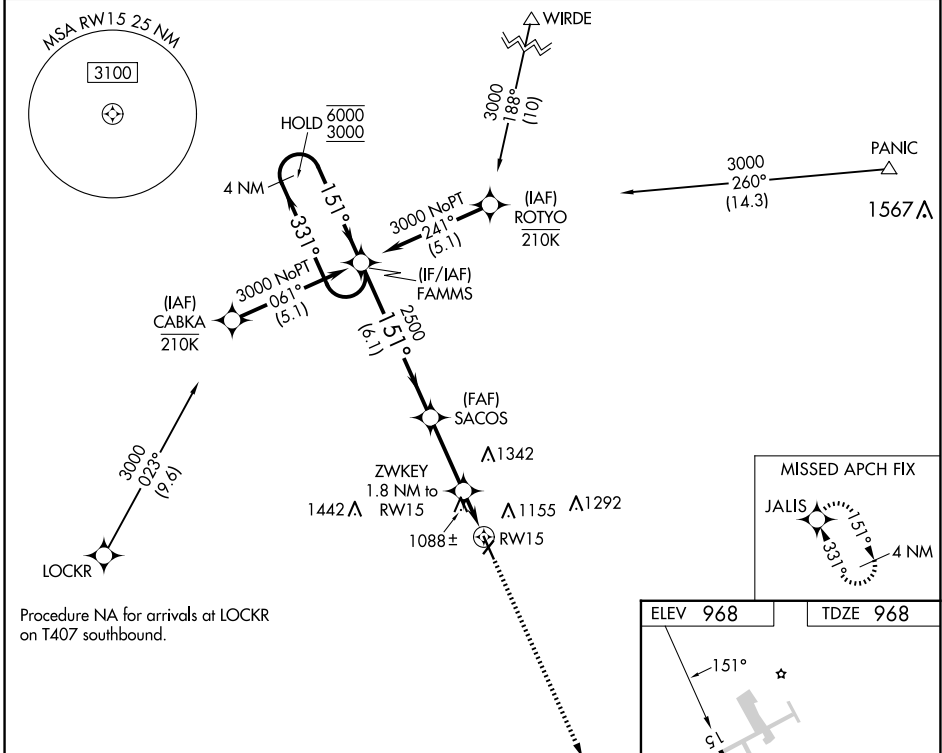
APP CRS	Rwy Idg	5100
151°	TDZE	968
	Apt Elev	968

RNAV (GPS) RWY 15

HARRY STERN (BWP)

RNP APCH - GPS.	MISSED APPROACH: Climb to 3000 direct JALIS and hold.
<p>▼ Circling NA to Rwy 3 and 21. Rwy 15 helicopter visibility reduction below 3/4 SM NA. VDP NA when using FFM altimeter setting. When local altimeter setting not received, use FFM altimeter setting and increase all MDAs 80 feet and LNAV visibility Cat C and D 3/8 SM, and Circling visibility Cat C and D 1/4 SM.</p>	

AWOS-3 127.875	MINNEAPOLIS CENTER 127.35 278.3	UNICOM 123.0 (CTAF) 0
--------------------------	---	---------------------------------



CATEGORY	A	B	C	D
LNAV MDA	1340-1 372 (400-1)			
CIRCLING	1520-1	552 (600-1)	1660-2 692 (700-2)	1660-2 1/4 692 (700-2 1/4)

NC-1, 20 MAR 2025 to 17 APR 2025

NC-1, 20 MAR 2025 to 17 APR 2025