

SW-4, 20 MAR 2025 to 17 APR 2025

ATIS 119.425
GND CON 118.0
GLENDALE TOWER * 121.0
LUKE DEP CON * 118.15 363.125
PHOENIX DEP CON 120.7 239.0

NOTE: RNAV 1.
NOTE: Turbojets and turboprops only.
NOTE: RADAR required.
NOTE: GPS required.
NOTE: ABQ transition ATC assigned only.
NOTE: Aircraft filing over ACH, LBL, ONM, CNX, PNH, MMB, TCC, IRW, and TXO file FTHLS DEPARTURE.
NOTE: Aircraft filing over ABQ, CIM, FTI, and GCK file LALUZ DEPARTURE.
NOTE: Aircraft filing over DEN, RSK, ALS, and points north of ALS file YOTES DEPARTURE.
NOTE: Aircraft departing KGEU and KGYR ATC assigned only.

TAKEOFF MINIMUMS
Rwys 1, 19: Standard.

TOP ALTITUDE:
ASSIGNED BY ATC

ALBUQUERQUE
ABQ

FL180
*11500
(71)
044°

FL180
*11700
(65)
077°

FL180
*11700
(65)
077°

FL180
*11700
(65)
077°

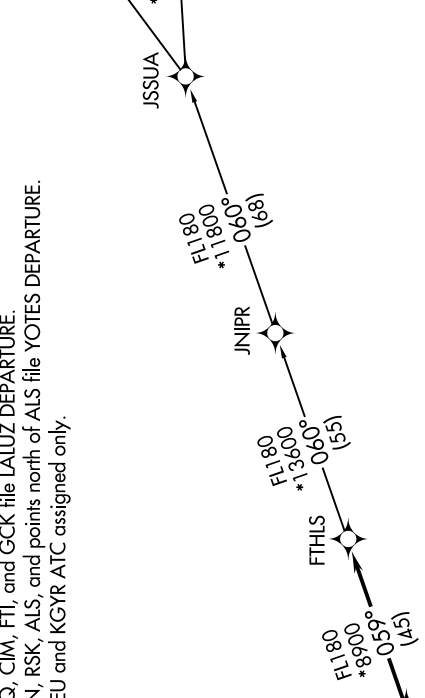
FL180
*11700
(65)
077°

FL180
*11700
(65)
077°

FL180
*11700
(65)
077°

FL180
*11700
(65)
077°

FL180
*11700
(65)
077°



DEPARTURE ROUTE DESCRIPTION

TAKEOFF RUNWAY 1: Climb heading 014° or as assigned by ATC, thence. . . .
TAKEOFF RUNWAY 19: Climb heading 200° or as assigned by ATC, thence. . . .
. . . . expect RADAR vectors to BROAK, then on track 059° to FTHLS, then on (transition).
Maintain ATC assigned altitude, expect filed altitude 3 minutes after departure.

ALBUQUERQUE TRANSITION (FTHLS6.ABQ)

JNIPR TRANSITION (FTHLS6.JNIPR)

MAXXO TRANSITION (FTHLS6.MAXXO)

NOTE: Chart not to scale.

SW-4, 20 MAR 2025 to 17 APR 2025